

**CITY OF PLYMOUTH
AGENDA
Special City Council
Medicine Lake Room
3400 Plymouth Boulevard, Plymouth, MN
April 28, 2026, 5:00 PM**

1. CALL TO ORDER

2. TOPICS

2.1 State of Water and Sewer

1. Presentation

2.2 Update on Local Watersheds

1. Presentation
2. Watershed Map

2.3 Set future study sessions and agenda topics

1. Calendar

3. ADJOURNMENT

To: Dave Callister, City Manager

Prepared by: Abbie Browen, Public Works Operations Manager

Reviewed by: Michael Thompson, Public Works Director

Item: **State of Water and Sewer**

1. Action Requested:

Discuss water distribution, water production and sanitary sewer collection systems.

2. Background:

The water distribution, water production and sanitary sewer collection systems provide essential services to Plymouth residents and businesses. These services include providing drinking water, a precious resource often taken for granted. Another vital service often overlooked is the ability to flush a toilet. The utilities division staff work hard to make these necessary services happen, and when there is a disruption, the team is responding to, troubleshooting, and repairing these systems quickly.

This presentation will provide an overview of the three systems, discuss policies that are important to understand and to educate the public on, review ongoing maintenance programs, and highlight major capital projects in each area. Finally, the presentation will highlight the utilities division staff that make the services happen day-to-day, and provide priorities moving forward.

3. Budget Impact:

This update to the council has no budgetary impacts.

4. Attachments:

1. Presentation



State of Water and Sewer

April 28, 2026

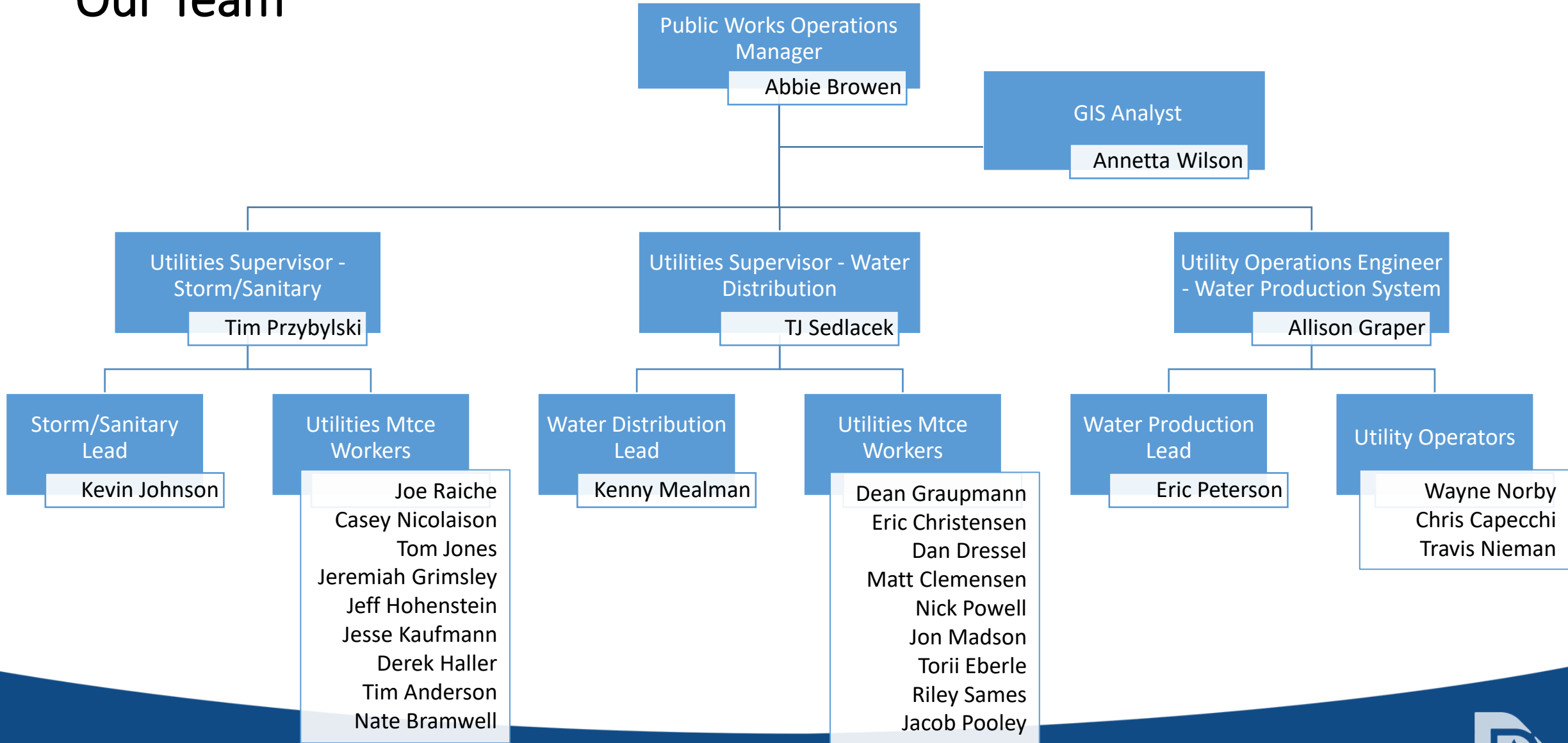


MAIN TOPICS COVERED TODAY

- Water Production
 - Overview
 - Water Quality
 - Projects
- Water Distribution System
 - Overview
 - Programs
 - Projects
- Sanitary Sewer Collection
 - Overview
 - Programs
 - Projects
- System Operations
 - Software
 - Cybersecurity
 - Investing in Staff
 - Priorities



Our Team



OVERVIEW

Water Production System

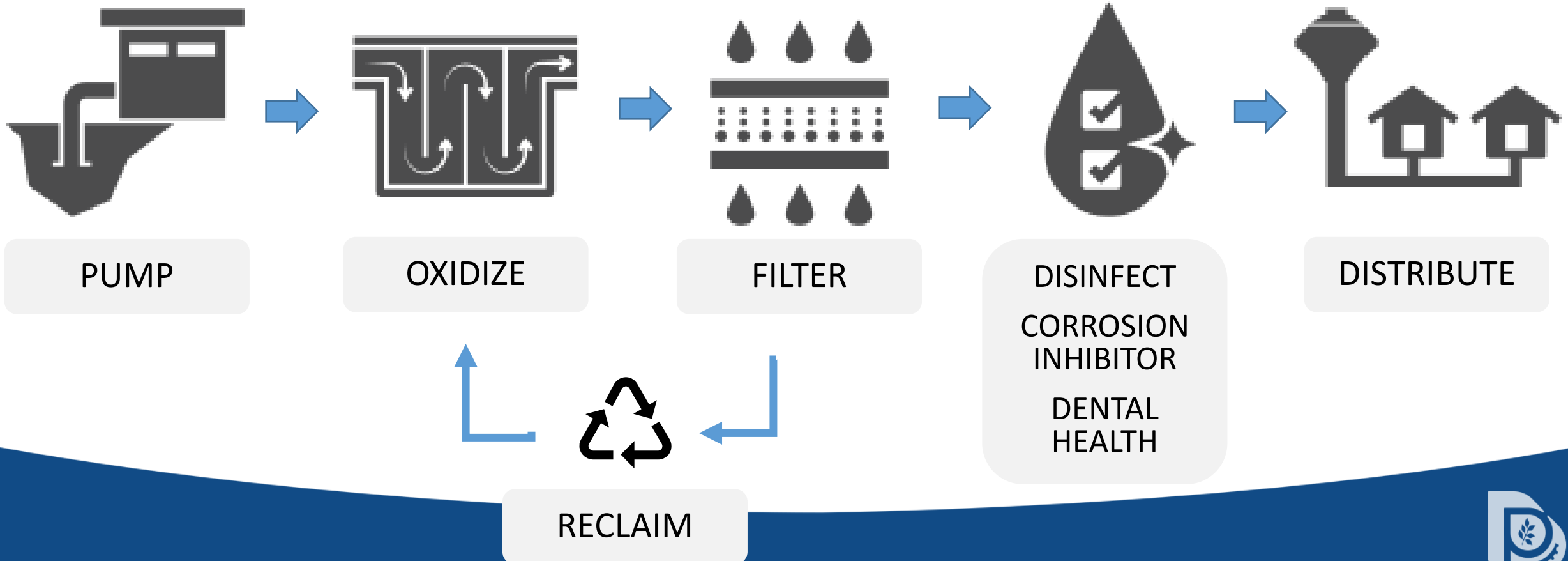
Assets:

- 18 Groundwater Wells
- 2 Treatment Plants
 - Central WTP – 13 MGD
 - Zachary WTP – 17 MGD
- 5 Water Towers + 1 Reservoir
- 5 Miles of Raw Watermain



OVERVIEW

Water Treatment Process



OVERVIEW

Water Sustainability

Water Efficiency Rebate Program

Rebates for 75% of the cost, up to:

- \$50 for Toilets
- \$100 for Washing Machines
- \$100 for Dishwashers
- \$200 for Residential Irrigation Controllers or \$500 for Commercial/Multi-Family Controllers
- \$15 per Sprinkler Head up to \$500 (minimum 10 heads)
- \$125 for Soil Moisture Sensors
- \$200 for Irrigation System Audit



Water Sprinkling Restrictions Reminder

Plymouth has restrictions on outdoor water use from May through September. Irrigation systems must be adjusted accordingly.

- **Lawn sprinkling is prohibited from noon to 5 p.m.** on all days.
- **Odd-even schedule is in effect** – addresses ending in odd numbers may water on odd-numbered calendar days (and vice versa).

Exceptions: Hand-held watering, private wells, recreation, etc.
Info: plymouthmn.gov/watering



Notice of Violation
A violation of the restrictions at this property was observed. Subsequent offenses will incur fines (\$100 per violation).

Date of violation: _____

WATER QUALITY

2025 Consumer Confidence Report

Contaminant	EPA's Action Level	90 th Percentile	Violation	Typical Sources
Lead	90% of homes < 15 ppb	2 ppb	NO	Corrosion of household plumbing.
Copper	90% of homes < 1.3 ppm	1.23 ppm	NO	

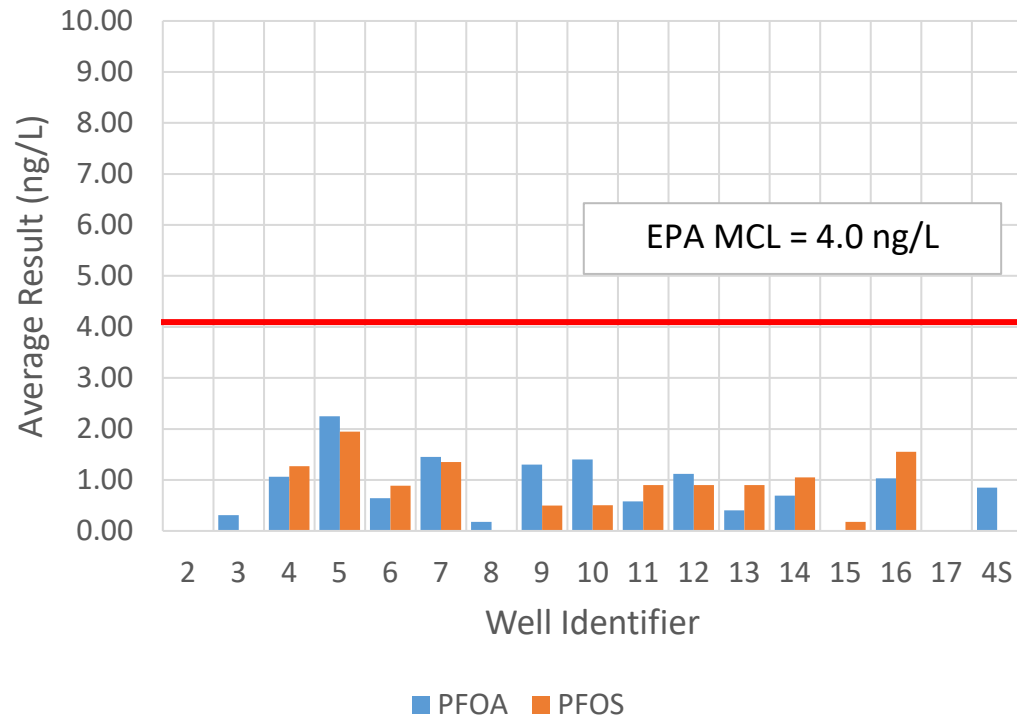
Contaminant	EPA's Limit (MCL)	Highest Result	Violation	Typical Sources
Gross Alpha	15 pCi/l	4.8 pCi/l	NO	Erosion of natural deposits.
Combined Radium	5 pCi/l	2.7 pCi/l	NO	
Barium	2 ppm	0.15 ppm	NO	

Contaminant	EPA's Limit (MCL)	Highest Result	Violation	Typical Sources
Total Chlorine	4.0 ppm	0.63 ppm	NO	Disinfection additive
TTHMs	80 ppb	42.3 ppb	NO	Disinfection by-product
HAA	60 ppb	14.6 ppb	NO	
Fluoride	4.0 ppm	0.62 ppm	NO	Erosion of natural deposits; teeth additive

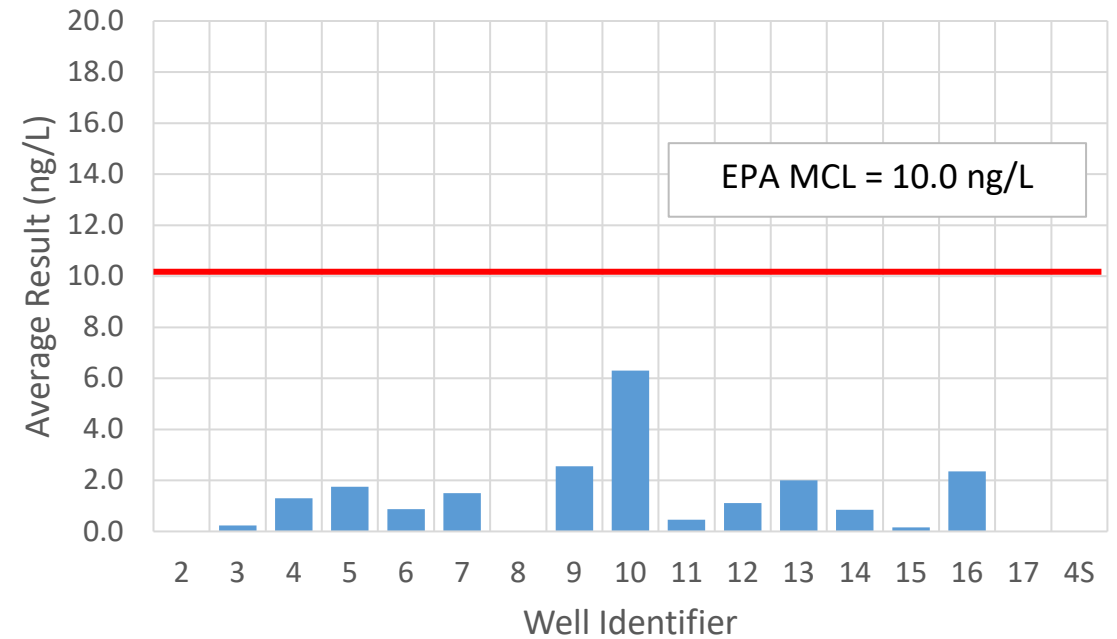
WATER QUALITY

Well PFAS Levels

PFOA and PFOS



PFHxS

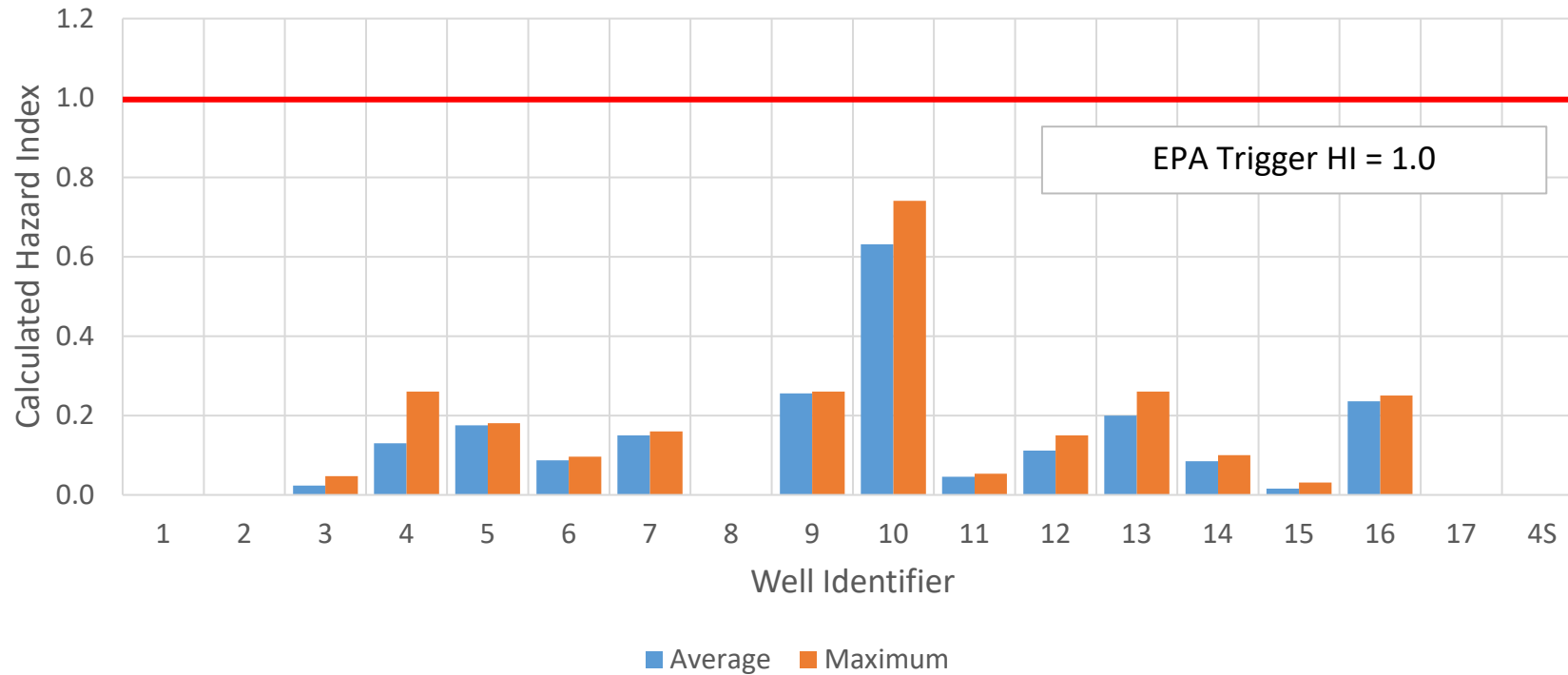


WATER QUALITY

Well EPA Hazard Index

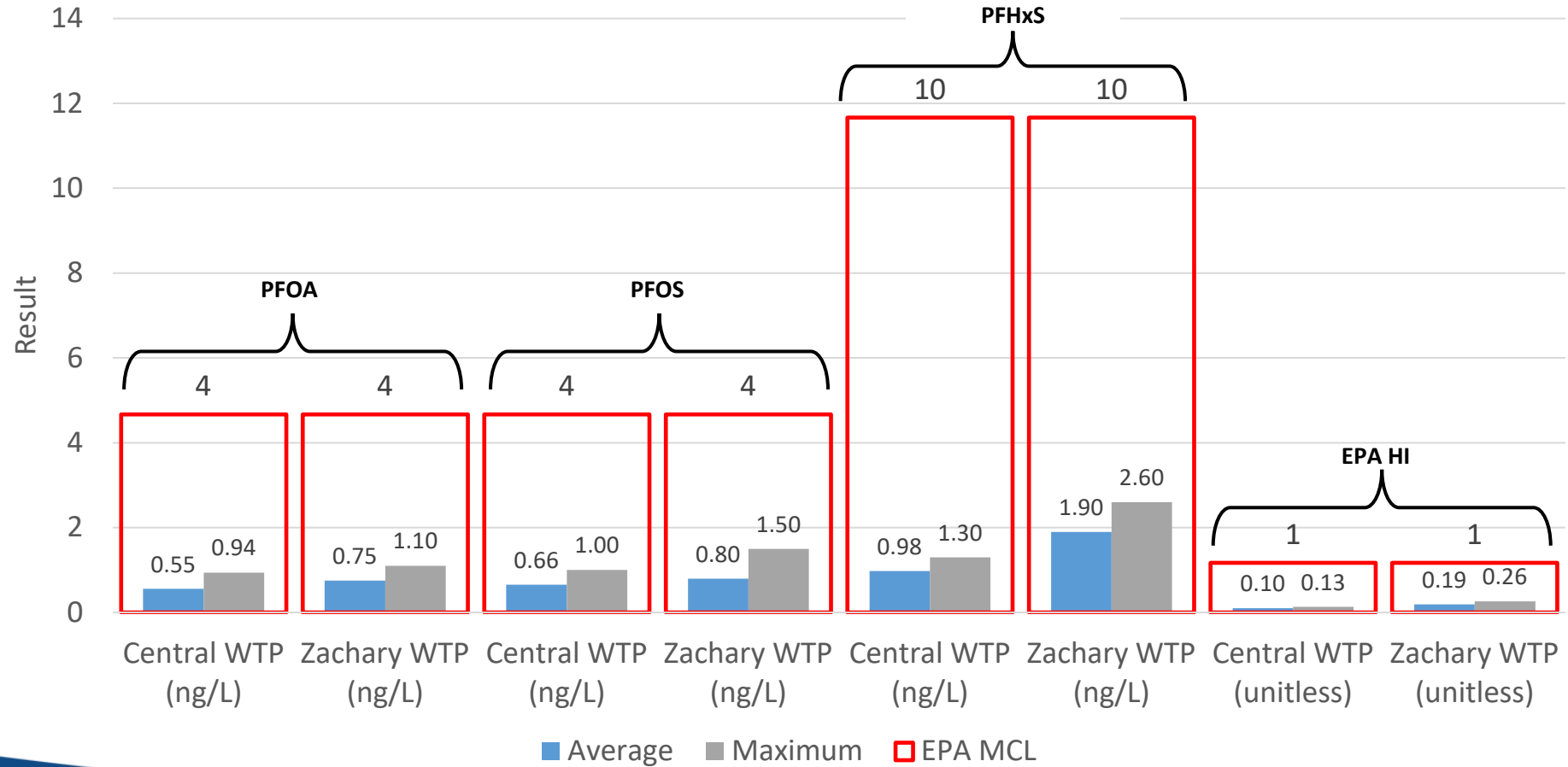
$$\text{Hazard Index (1 unitless)} = \left(\frac{[\text{HFPO} - \text{DA}_{\text{ppt}}]}{[10 \text{ ppt}]} \right) + \left(\frac{[\text{PFBS}_{\text{ppt}}]}{[2000 \text{ ppt}]} \right) + \left(\frac{[\text{PFNA}_{\text{ppt}}]}{[10 \text{ ppt}]} \right) + \left(\frac{[\text{PFHxS}_{\text{ppt}}]}{[10 \text{ ppt}]} \right)$$

EPA Hazard Index by Well



WATER QUALITY

Finished Water PFAS Levels



WATER QUALITY PFAS Settlement

Description	3M	DuPont	Tyco	BASF	Total
Settlement Amount	\$2.30M	\$238k	\$233k	\$97k	\$2.87M
Actual Paid to Date	\$1.36M	\$238k	\$233k	\$97k	\$1.93M
Remaining Balance	\$941k	\$0	\$0	\$0	\$941k

2/3 OF SETTLEMENT RECEIVED TO DATE



PROJECTS

Water Production System

Recently/Nearly Complete

- Annual Well & Pump Rehabilitation
- ZWTP Enhancements - Plate Settler
Startup expected by June

In Planning Phase

- Annual Well & Pump Rehabilitation
- CWTP Process and HVAC Rehabilitation







OVERVIEW

Water Distribution System

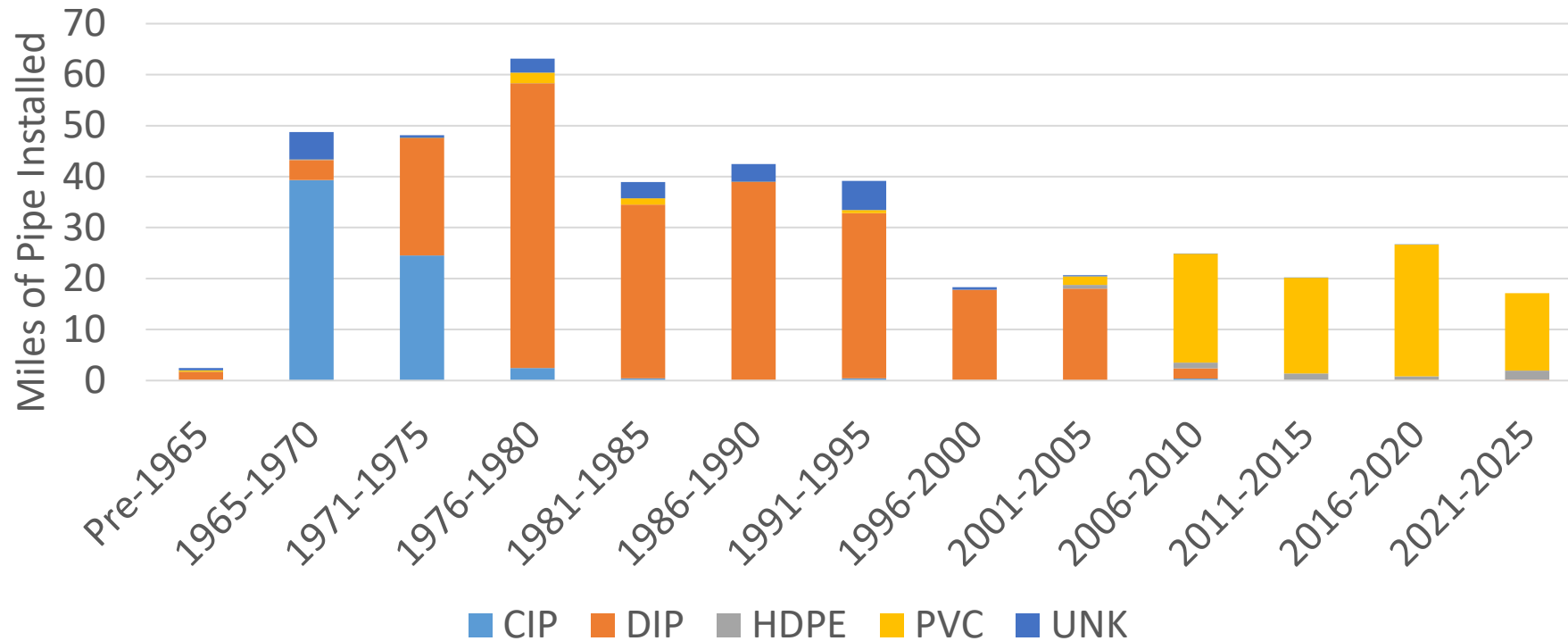
Assets:

- 411 miles of pipe, ranging 6" to 36" diameter
- 13,000+ system valves
- 25,000+ services – each with curb stop and meter (sometimes multiple)
- 4500 public hydrants
- 2200 private hydrants

OVERVIEW

System Age

Watermain Installation Year & Pipe Material



OVERVIEW

Systemwide Risk and Prioritization Analysis

CONSEQUENCE OF FAILURE (COF)

DISRUPTED DEMAND
CRITICAL TRANSPORTATION CROSSINGS
CRITICAL WATERBODY CROSSINGS
CRITICAL FACILITIES
MAJOR WATER USERS
TOTAL AVAILABLE FIRE FLOW
MAXIMUM FLOW

LIKELIHOOD OF FAILURE (LOF)

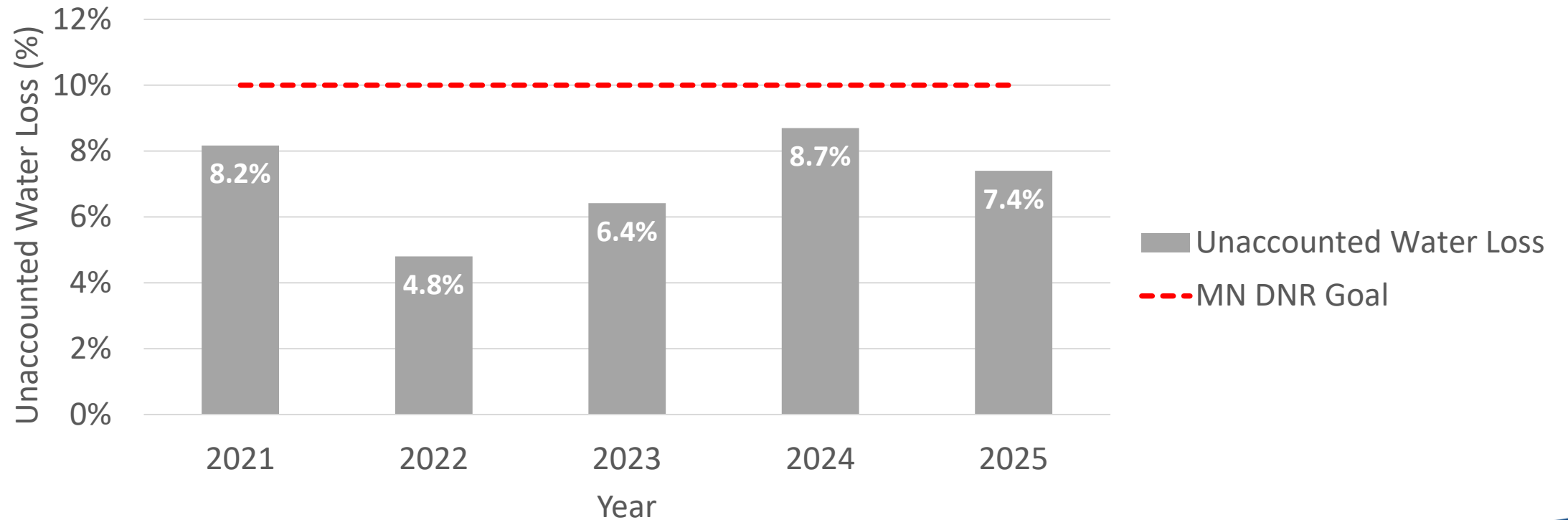
REMAINING USEFUL LIFE
BREAK HISTORY
SOIL CORROSIVITY

$$\text{COF} \times \text{LOF} = \text{RISK}$$

OVERVIEW

Unaccounted Water Loss

Plymouth 5-Year Unaccounted Water Loss (%)



OVERVIEW

Annual Water System Repairs

PIPE BREAKS
35 PER YEAR

VALVE REPAIRS
40 PER YEAR

SERVICE REPAIRS
75 PER YEAR

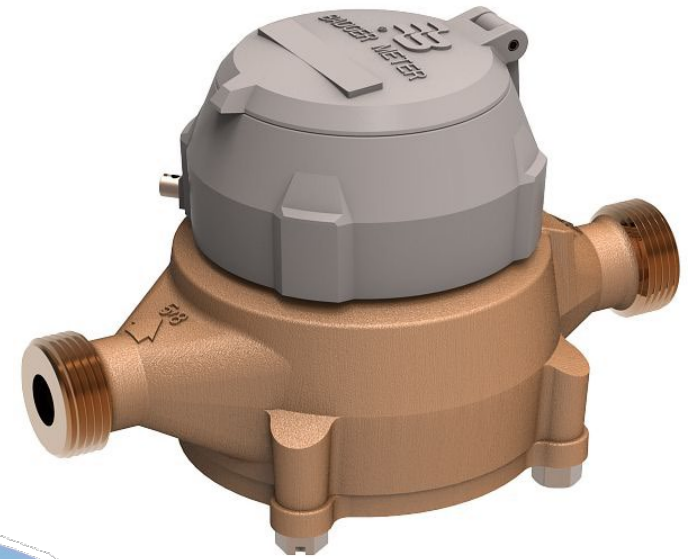
HYDRANT REPAIRS
10 PER YEAR



PROGRAMS

Water Meters

- Optimize ROI from 2016 Systemwide Meter Replacement
- Large Meter Testing & Calibration
- Meter Reading Software Upgrade
- Cellular Endpoint Pilots
- Turbo/Compound to Ultrasonic



CELLULAR TRANSMITTER



PROGRAMS

Annual Maintenance

- Spring Flushing
- Hydrant Extension Installs
- Inspections
- Fire Flow Testing
- Valve Exercising
- Curb Stop Adjustments
- Leak Detection

PROJECTS

Watermain Lining

Past Projects

- Xenium Lane (2021)
- Old Rockford Road (2024)

Future Projects

- Niagara Lane (2027)



PROJECTS

Lead Service Line Inventory

1968 RESOLUTION

RESIDENT SURVEY

HOMES BUILT AFTER 1985

CONSTRUCTION AS-BUILTS

PROPERTY TIE CARDS

UTILITIES STAFF TESTIMONY

METER SERVICE ORDERS

SERVICE >2"

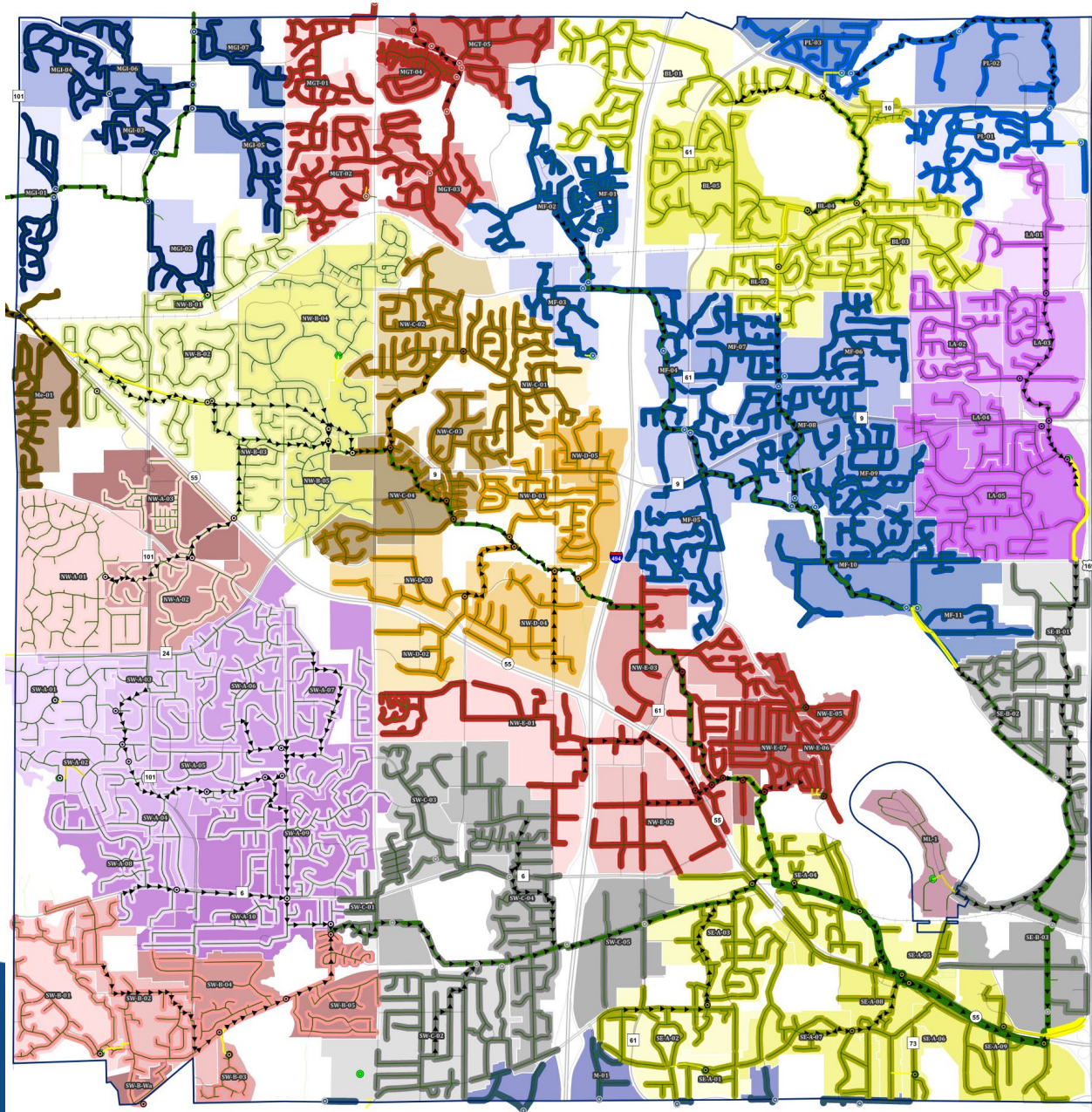
UTILITY POTHOLING

DOOR KNOCKING

2026 MDH
PILOT

2025 FOCUS





OVERVIEW

Sanitary Collection System

- Assets:
- 9400 Manholes
 - 350 Miles of Pipe
 - 15 Lift Stations



OVERVIEW

Systemwide Analysis

Data Gap Analysis
• Q4 2025

Risk & Renewal
Prioritization
Model
• Q1 2026

Flow
Monitoring Site
Selection
• Q1 2026

Flow
Monitoring
• Q2 2026

Hydraulic
Model
Development
• Q2 – Q4 2026



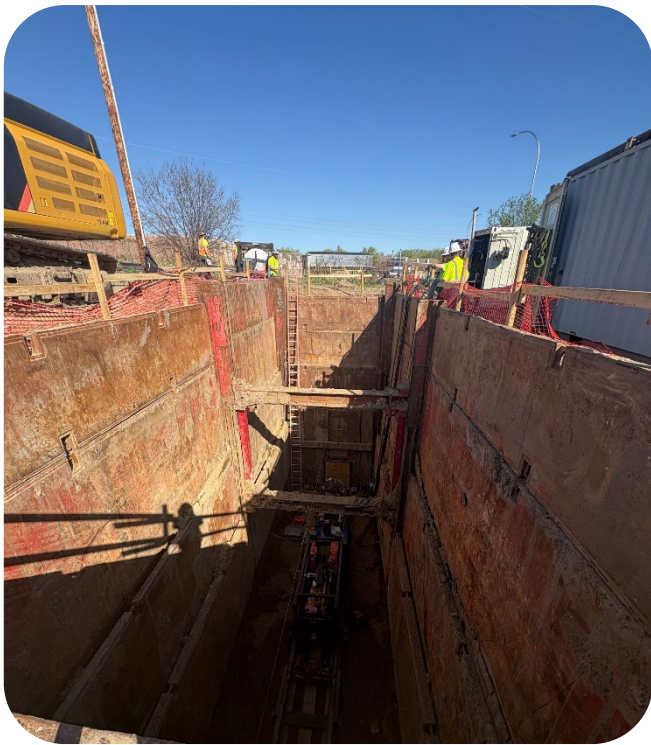


PROGRAMS

Annual Maintenance

- Jetting
- Televising
- Manhole Inspection for I&I
- Lift Station Cleanouts
- Generator Upkeep and Testing
- Manhole Sealing





PROJECTS

Recently Complete

- I-494 Crossing Rehabilitation (2024 & 2025)
- Mission Farms Lift Station Upgrades

Construction Phase

- Lancaster Lift Station Upgrades

In Planning Phase

- Bass Lake Lift Station Improvements
- Flow Monitoring Program

PROJECTS

Sewer Lining and Televising Example

PRE-LINING



PROJECTS

Sewer Lining and Televising Example

POST-LINING



SYSTEM OPERATIONS Software

OpenGov 

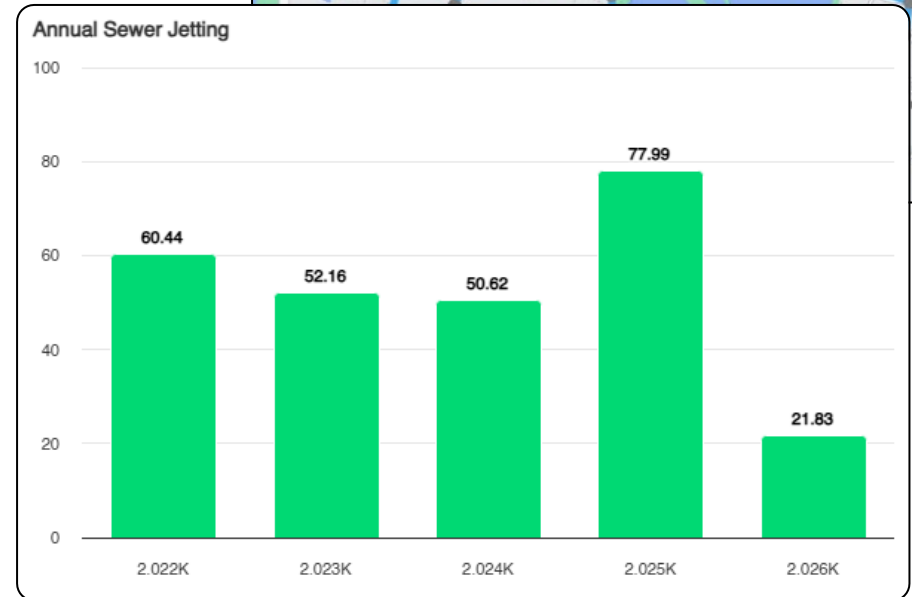
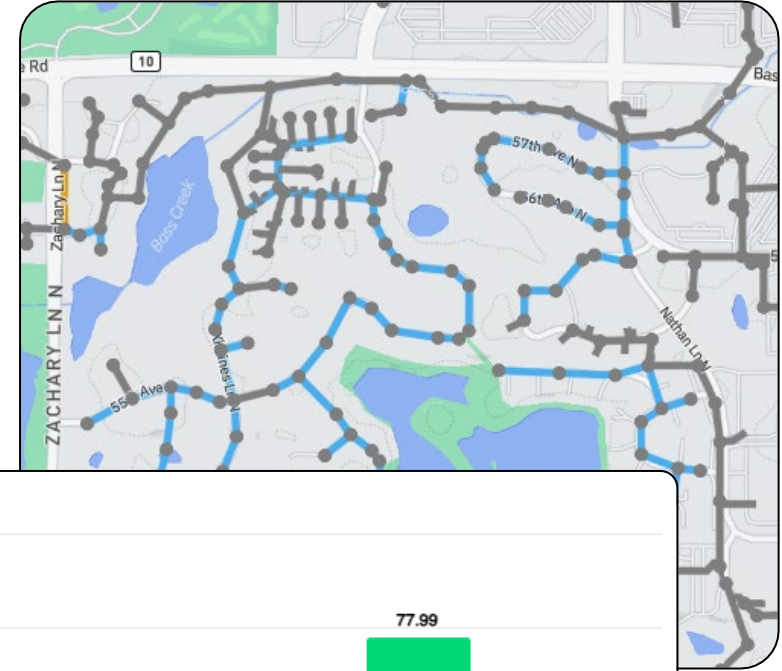
 Waterly

 KorTerra

 temetra

 ArcGIS[®]


 SewerAI



SYSTEM OPERATIONS

Cybersecurity



Current Plymouth Initiatives

1. Network Isolation
2. Strict Access Controls & MFA
3. System Hardening & Patching
4. Active Monitoring & Threat Detection
5. Incident Response Planning
6. Staff Training

Industry Resources

1. EPA Cybersecurity Assessment (April 2025)
2. EPA Risk & Resiliency Assessment (December 2025)
3. MNIT and Cybersecurity Task Force monthly Water System calls

SYSTEM OPERATIONS

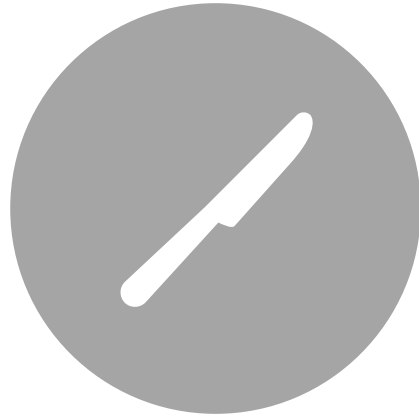
Investing in Staff

Water Operator Certification
Wastewater Operator/Collections Certification
NASSCO Certification
Trench Competent Person
Confined Space Entry
Utility Locator School
Underground Utility Construction Inspection School
Public Works Certificate
Work Zone Safety Training
Public Utilities & Waterworks Management Institute
Water Utility Management Institute

SYSTEM OPERATIONS Priorities



MAKE DATA DRIVEN
DECISIONS



CONTINUE
"BREAD & BUTTER"
PROGRAMS



GAIN EFFICIENCY
THROUGH
TECHNOLOGY



INVEST IN OUR
STAFF

QUESTIONS?

**THANK YOU FOR THIS
OPPORTUNITY**



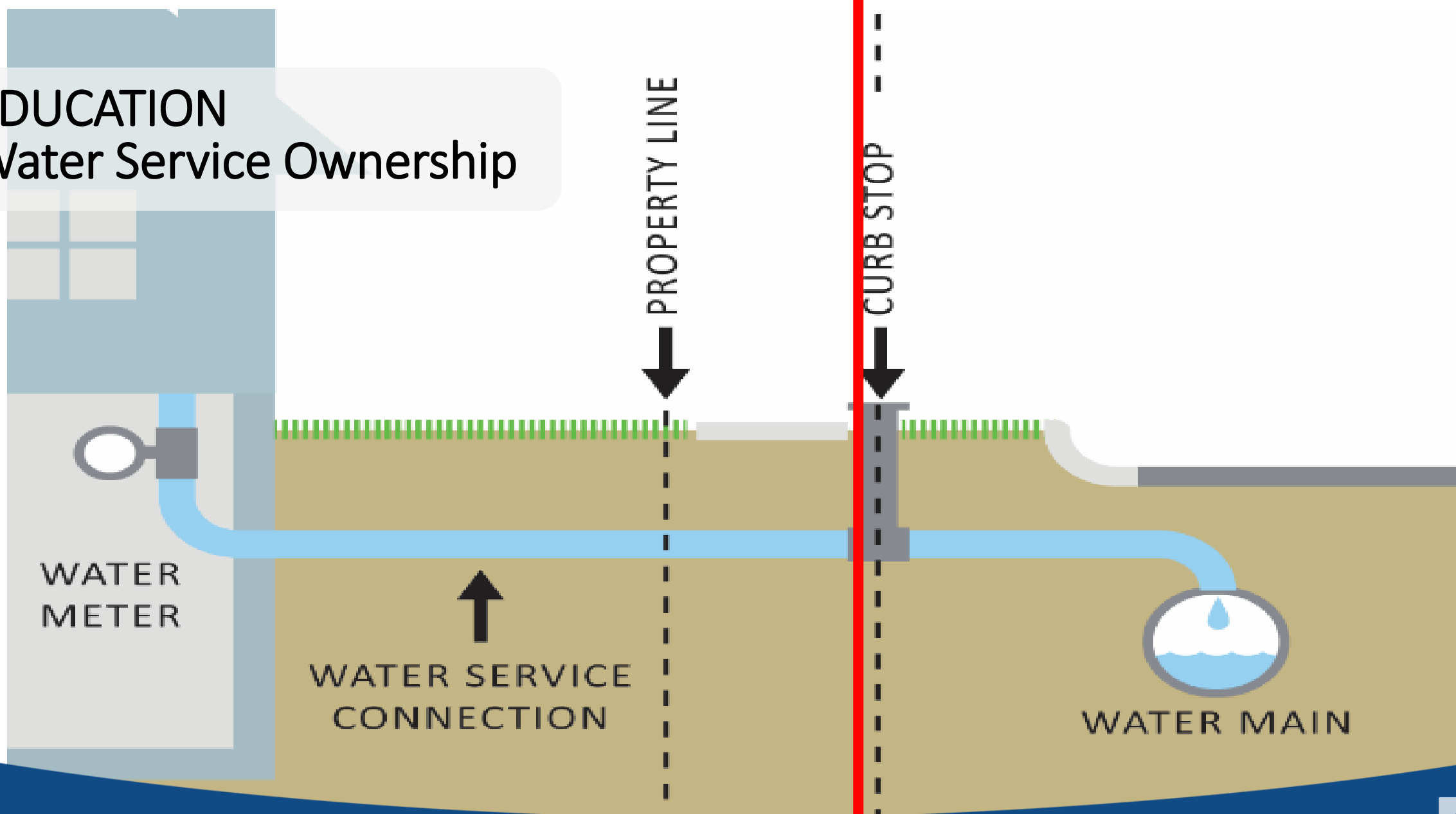
EDUCATION

Meter Ownership

- City only owns the meter and transmitter
- Piping, valves, and meter horn are Owner responsibility



EDUCATION Water Service Ownership



PROPERTY OWNER

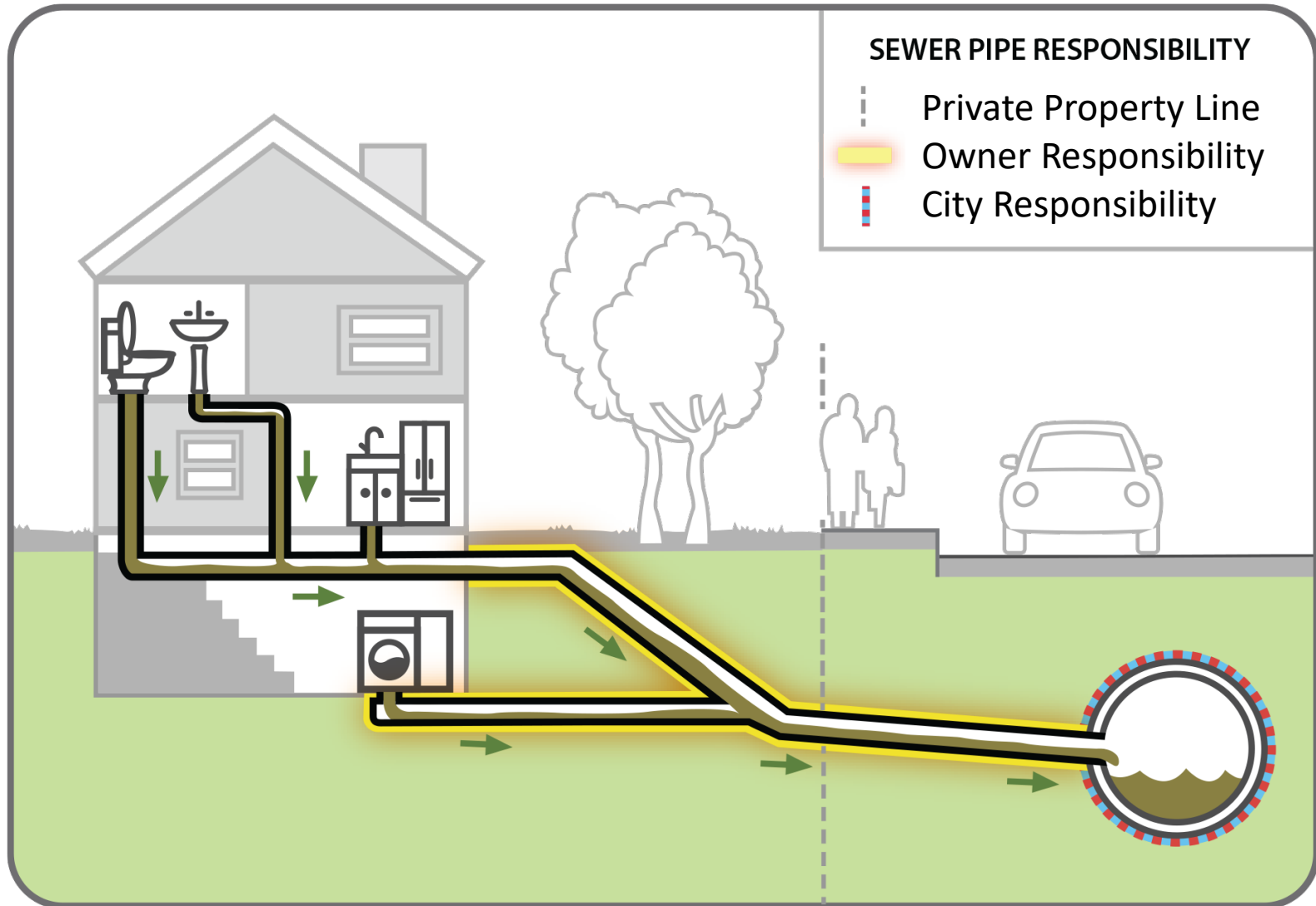


CITY OF PLYMOUTH



EDUCATION

Sewer Service Ownership



EDUCATION

No-Fault Sewer Backup Coverage

- Up to \$40k per property, annually
- Annual premium \$40k
- Average 2 backups/year



To: Dave Callister, City Manager

Prepared by: Ben Scharenbroich, Water Resources Supervisor

Reviewed by: Michael Thompson, Public Works Director

Item: **Update on Local Watersheds**

1. Action Requested:

Discuss watershed management commissions and watershed district.

2. Background:

Staff will provide an overview of the four watersheds with boundaries in the city limits.

The four watersheds are:

- Bassett Creek Watershed Management Commission
- Elm Creek Watershed Management Commission
- Minnehaha Creek Watershed District
- Shingle Creek Watershed Management Commission

3. Budget Impact:

N/A

4. Attachments:

1. Presentation
2. Watershed Map

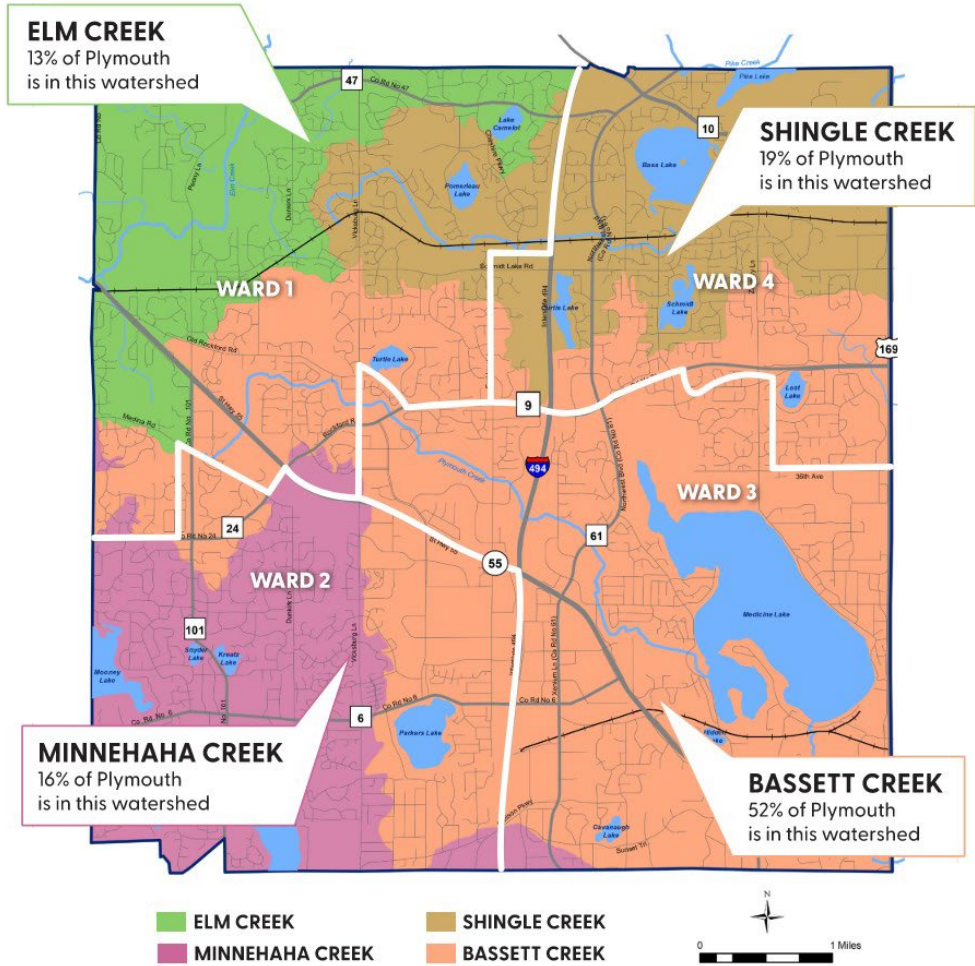


Update on Local Watersheds

Special Council Meeting: April 28, 2026



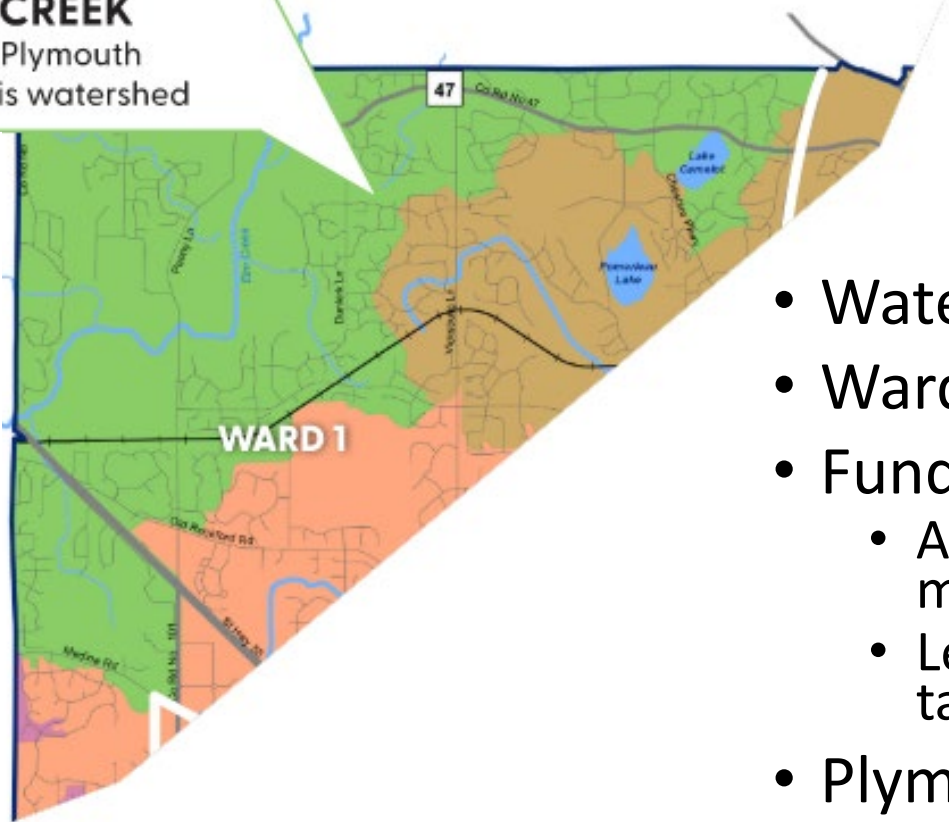
WATERSHEDS in the City of Plymouth



All figures listed are based on 2026 values.



ELM CREEK
13% of Plymouth
is in this watershed

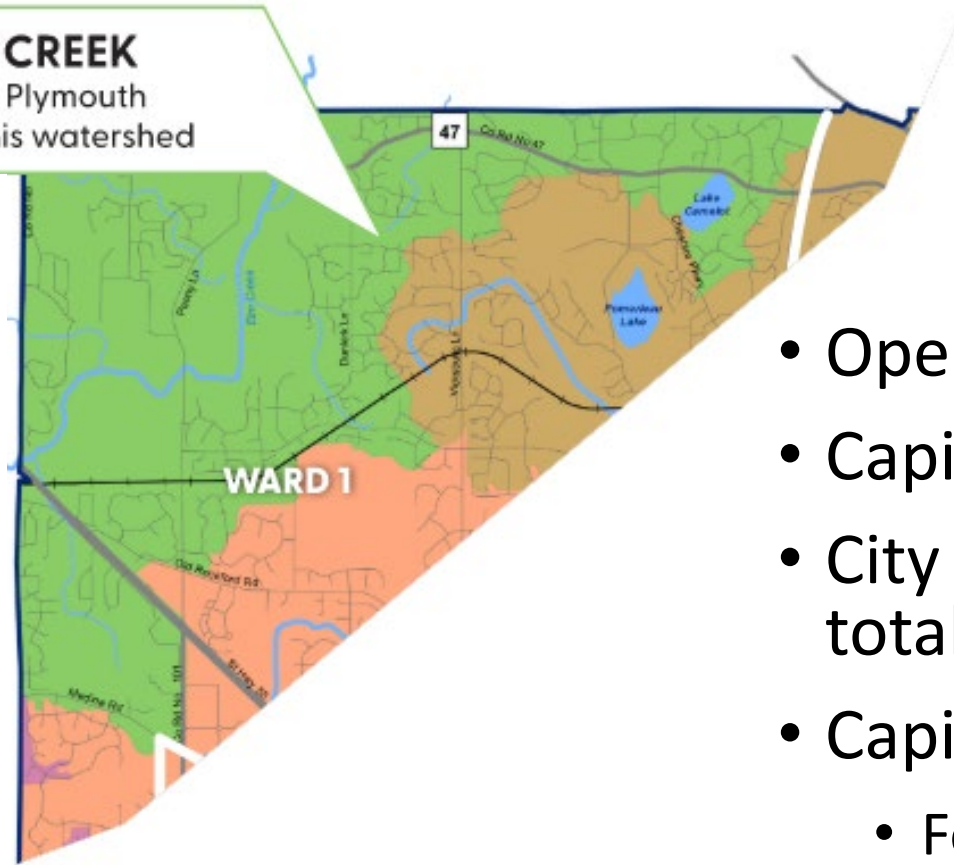


Elm Creek Watershed Management Commission

- Watershed Management Commission
- Ward 1
- Funding
 - Assessments to cities for operating costs based off taxable market value.
 - Levee for Capital Costs though Hennepin County property taxes.
- Plymouth is 3% of watershed
- Plymouth is represented by:
 - Commissioner: Christina Frazier
 - Alternate Commissioner: Ken Dutton



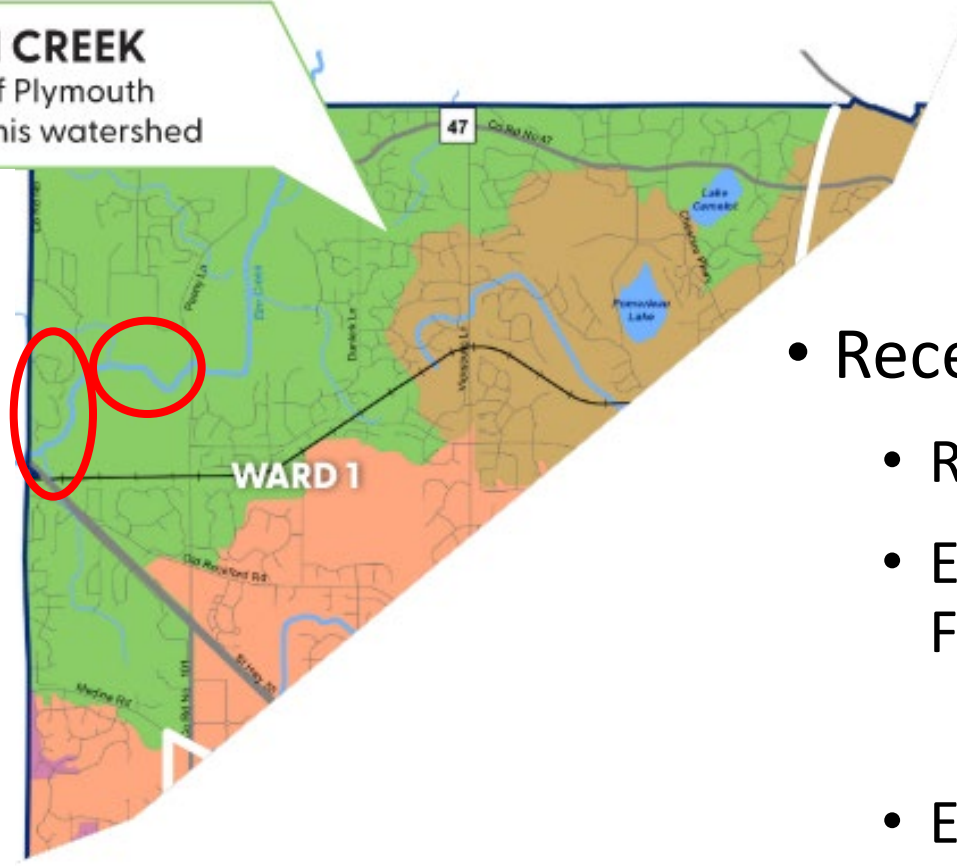
ELM CREEK
13% of Plymouth
is in this watershed



Elm Creek Watershed Management Commission

- Operating Budget: \$506,210
- Capital Budget: \$2,670,000
- City of Plymouth Contribution: \$28,093 (5.5%) of total operating budget
- Capital Project Process
 - Feasibility Study to evaluate project
 - 2-3 year from initiation to construction
 - City cost share is 75% (watershed max. typically \$250,000)

ELM CREEK
13% of Plymouth
is in this watershed

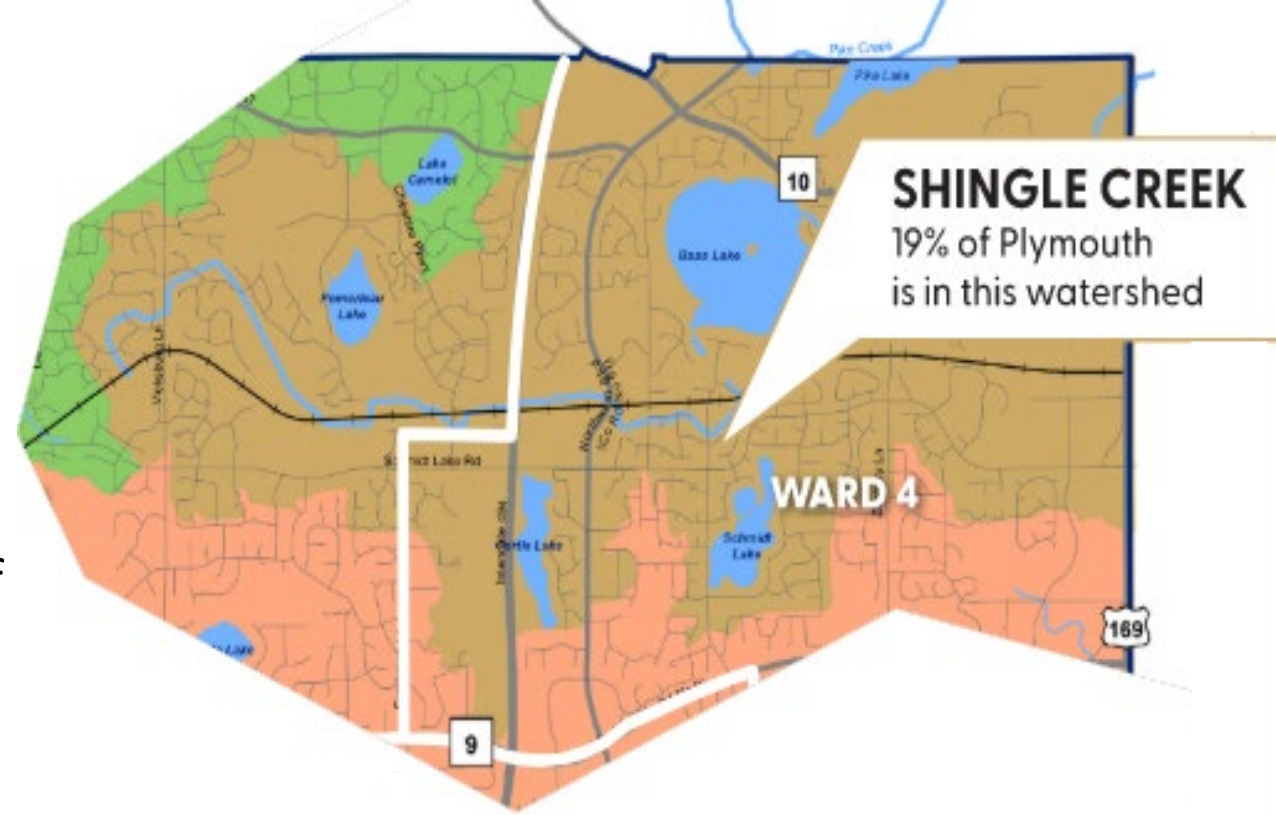


Elm Creek Watershed Management Commission

- Recent Projects:
 - Reperative air street sweeper (partially funded)
 - Elm Creek Stream Restoration & Iron Enhanced Sand Filter
 - Highway 55 to Wayzata High School
 - Elm Creek Stream Restoration: Wayzata High School to Peony Lane

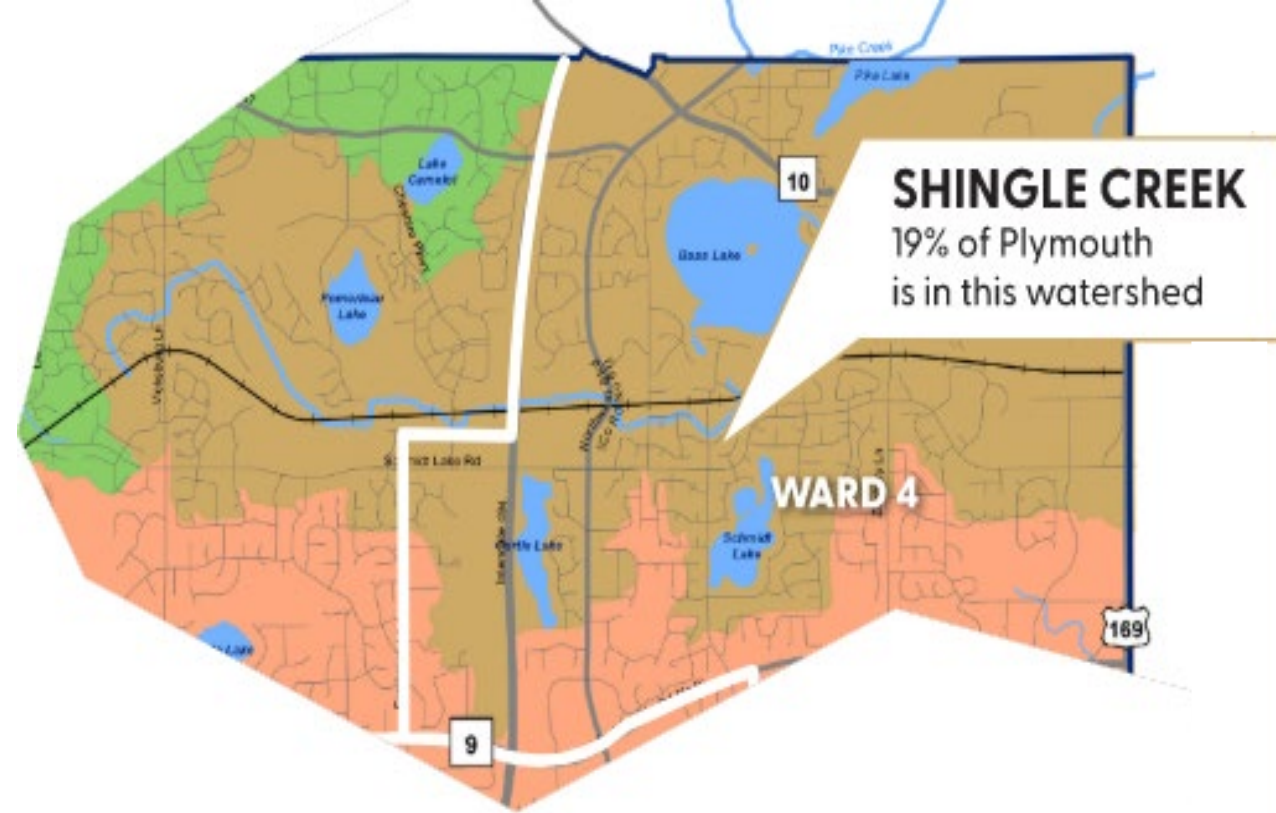
Shingle Creek Watershed Management Commission

- Watershed Management Commission
- Ward 1 & 4
- Funding
 - Assessments to cities for operating based off market value & area within city.
 - Levee for Capital Costs though Hennepin County property taxes.
- Plymouth is 15% of watershed
- Plymouth is represented by:
 - Commissioner: Andy Polzin
 - Alternate Commissioner: Leah Gifford



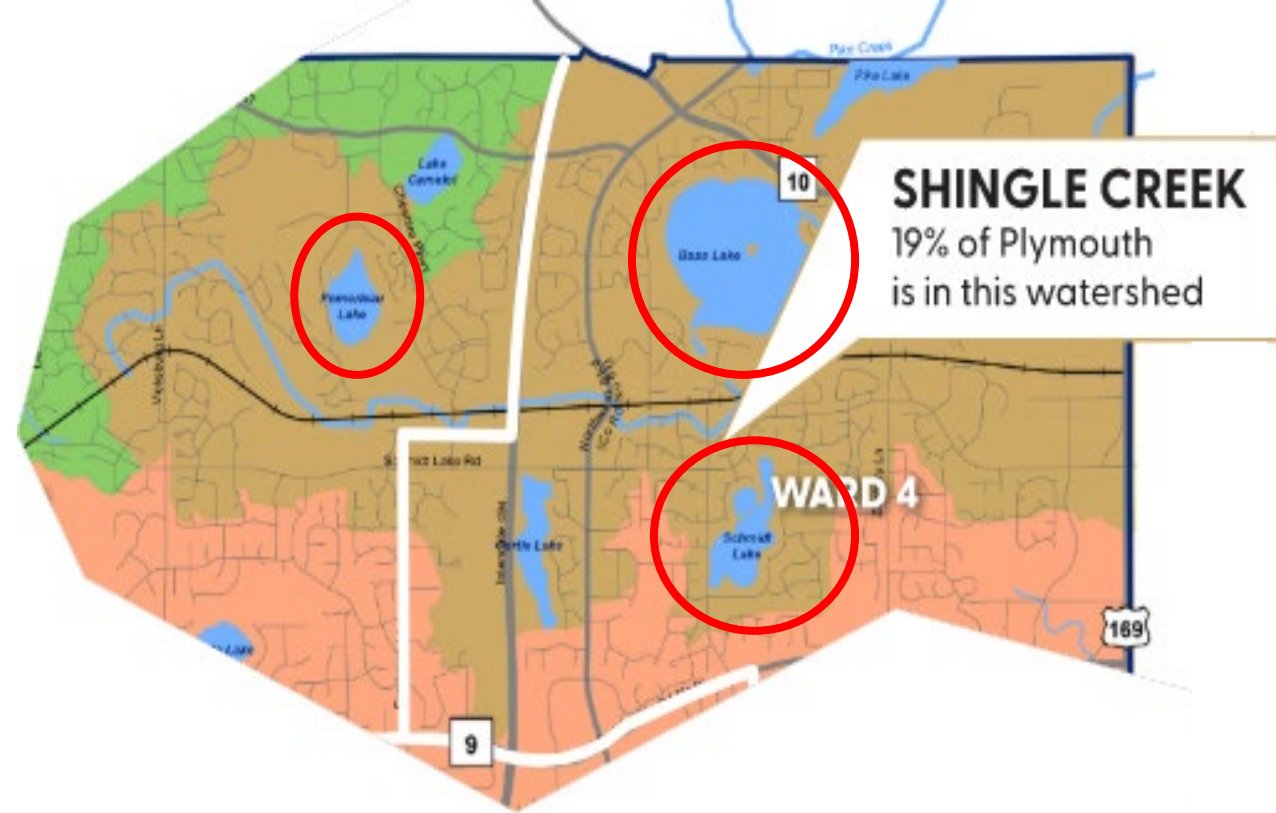
Shingle Creek Watershed Management Commission

- Operating Budget: \$413,230
- Capital Budget: \$630,000
- City of Plymouth Contribution: \$56,758 (15%) of total operating budget
- Capital Project Process
 - Feasibility Study to evaluate project
 - 2-3 year from initiation to construction
 - City cost share is 75% (watershed max typically \$250,000)
 - Watershed will pay 100% of internal loading projects on lakes



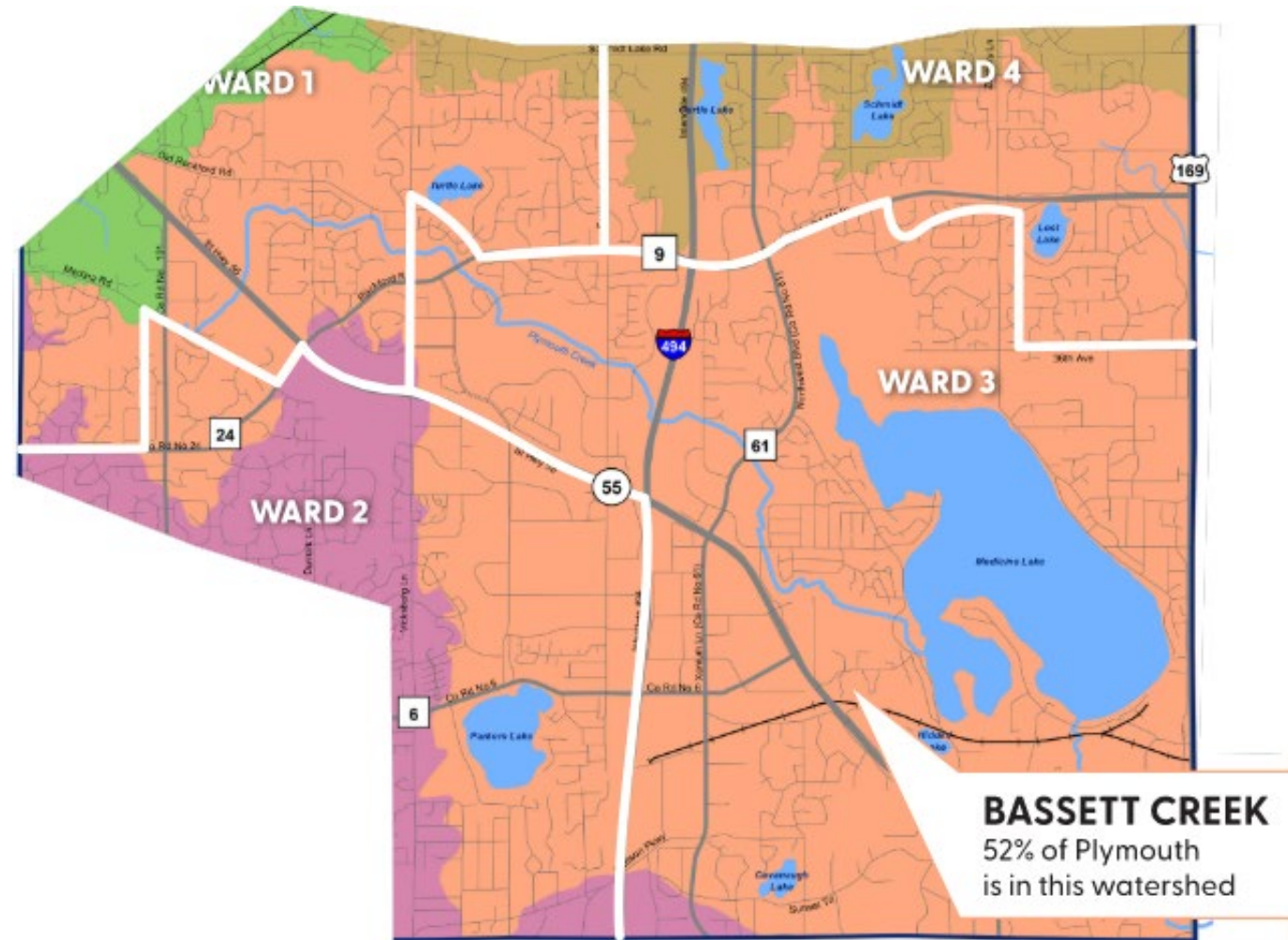
Shingle Creek Watershed Management Commission

- Recent Projects:
 - Reenerative air street sweeper
 - (partially funded)
 - Schmidt & Bass Lake Water Quality Improvements
 - Bass & Pomerleau Lakes Alum Treatment



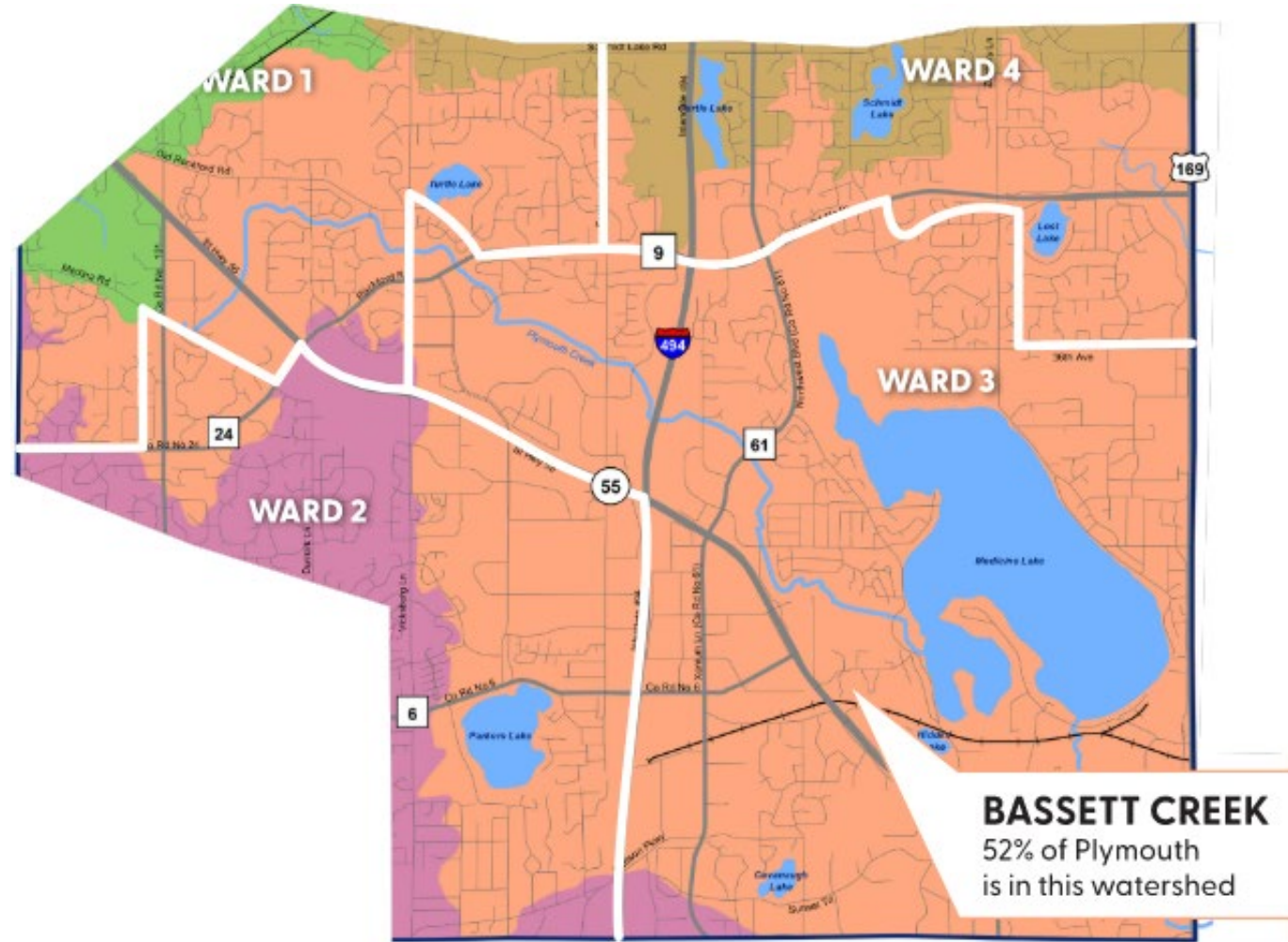
Bassett Creek Watershed Management Commission

- Watershed Management Commission
- Ward 1, 2, 3 & 4
- Funding
 - Assessments to cities for operating costs based off taxable market value & area within city.
 - Levee for Capital Costs though Hennepin County property taxes.
- Plymouth is 46% of watershed
- Plymouth is represented by:
 - Commissioner: Catherine Cesnik
 - Alternate Commissioner: Monika Vadali



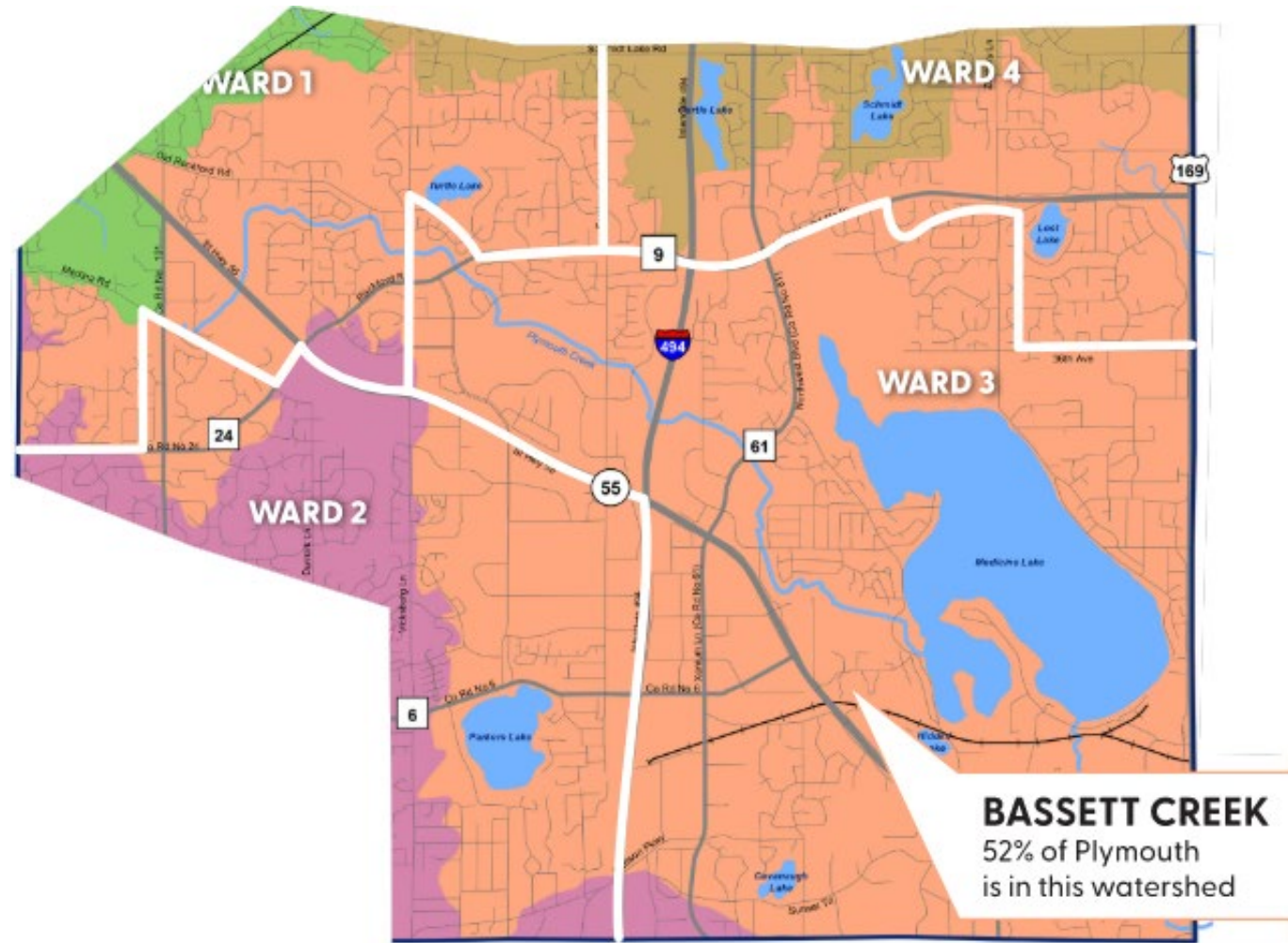
Bassett Creek Watershed Management Commission

- Operating Budget: \$918,730
- Capital Budget: \$2,803,500
- City of Plymouth Contribution: \$303,186 (33%) of total operating budget
- Capital Project Process
 - Feasibility Study to evaluate project
 - 2-3 year from initiation to construction; 10-year CIP
 - Watershed will pay up to 100% for Capital Projects



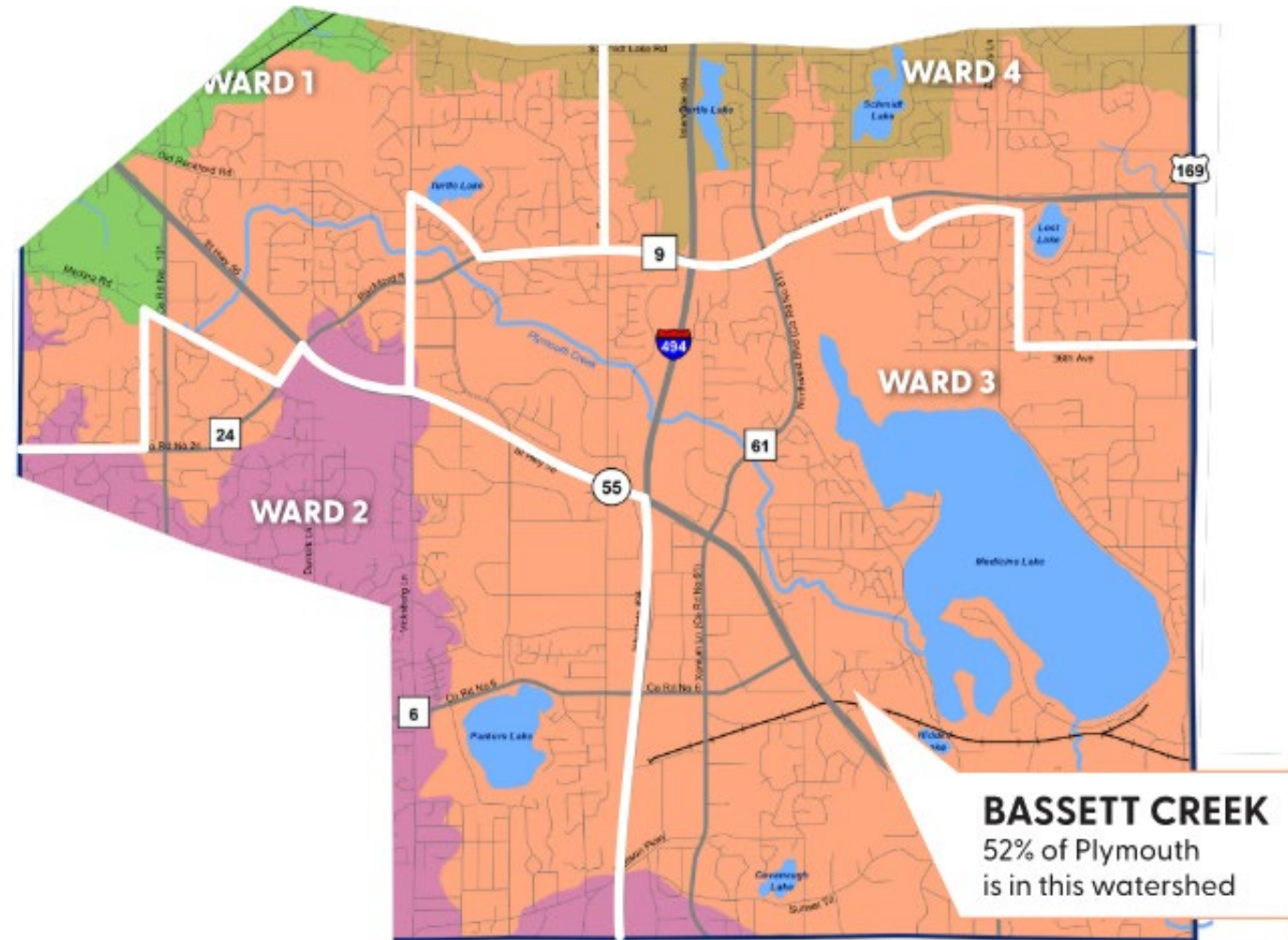
Bassett Creek Watershed Management Commission

- Recent Projects:
 - Four Seasons Water Quality Improvement
 - Plymouth Creek Stream Restoration: Dunkirk Ln to Plymouth Ice Center
 - Ponderosa Woods Stream Restoration
 - Regenerative air street sweeper (partially funded)
 - Plymouth Creek Restoration: Annapolis Lane



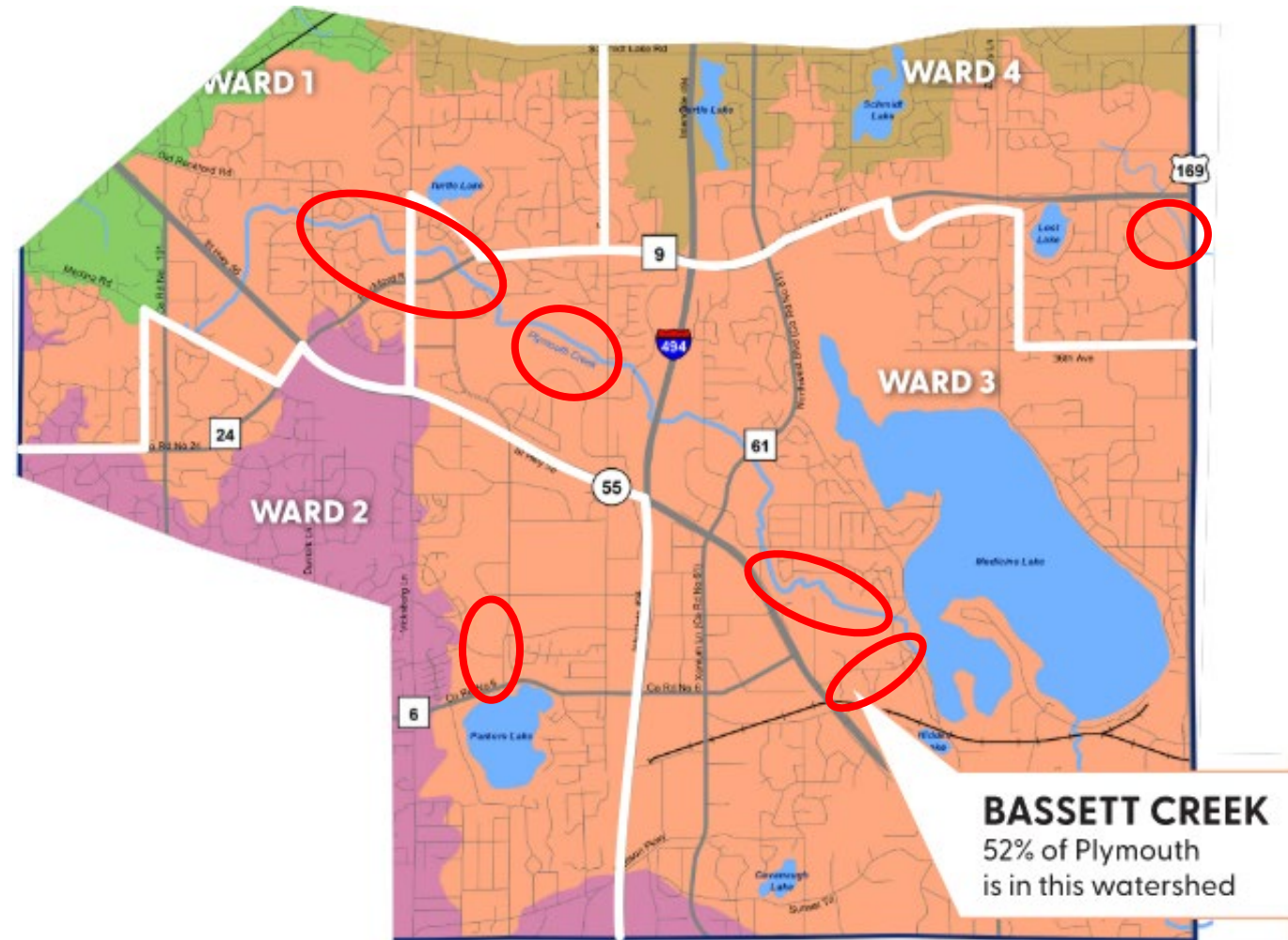
Bassett Creek Watershed Management Commission

- Recent Projects (continued)
 - Plymouth Creek Stream Restoration: Northwest of Medicine Lake
 - Parkers Lake Stream Restoration
 - Parkers Lake Area Chloride Management Study



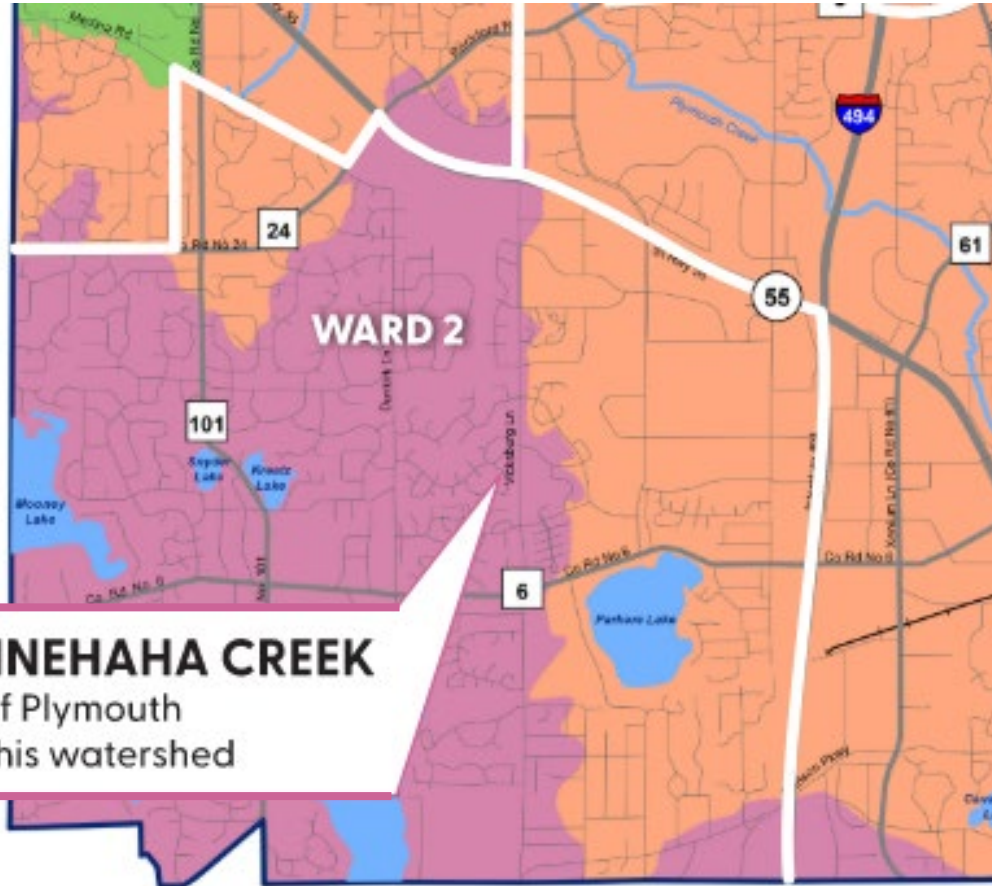
Bassett Creek Watershed Management Commission

- Recent Projects (continued)
 - Plymouth Creek Stream Restoration: Northwest of Medicine Lake
 - Parkers Lake Stream Restoration
 - Parkers Lake Area Chloride Management Study



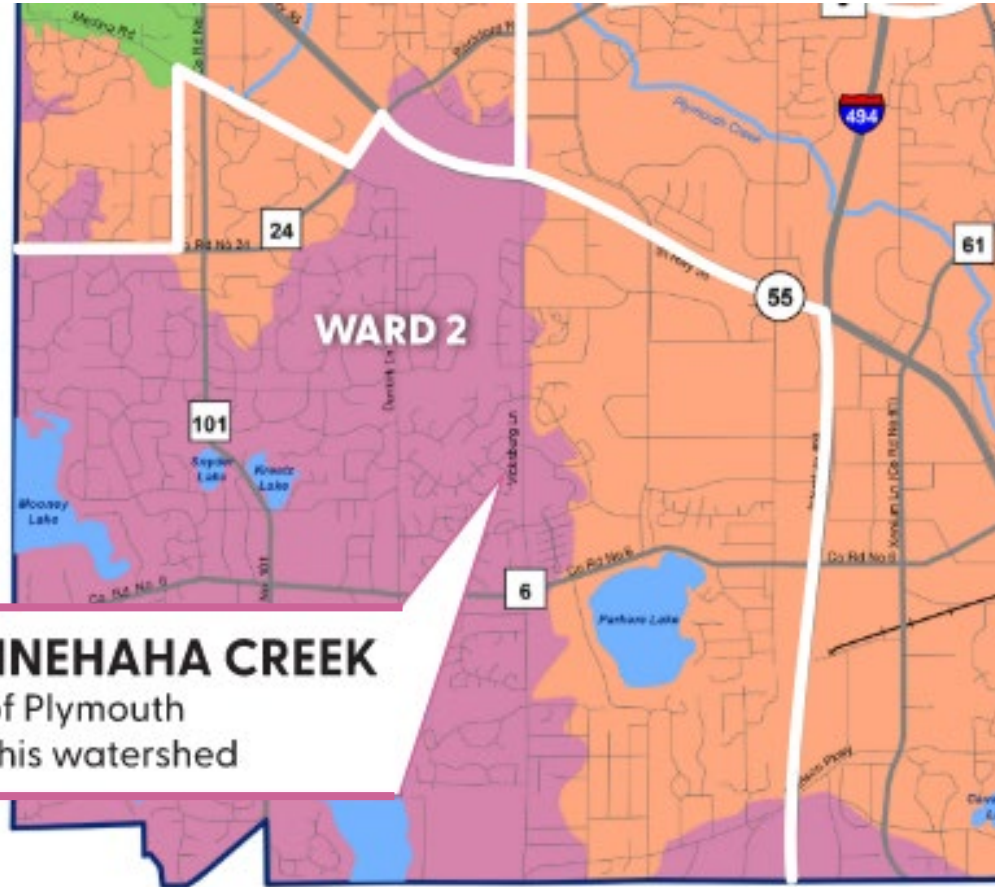
Minnehaha Creek Watershed District

- Watershed Management District
- Ward 1, 2 & 3
- Funding
 - Levee Operational and Capital Costs through Hennepin County property taxes.
- Plymouth is 4% of watershed
- Plymouth does not have a representative on the Board of Managers (appointed by County Board)



Minnehaha Creek Watershed District

- Operating Budget: \$8,406,432
- Capital Budget: \$6,100,256
- City of Plymouth Indirect Contribution: \$290,000 (2%) of total operating budget
- Capital Project Process
 - Strategically focus funds in key sub-watersheds
 - Opportunity based funding for partnership projects
 - Project funding is case by case

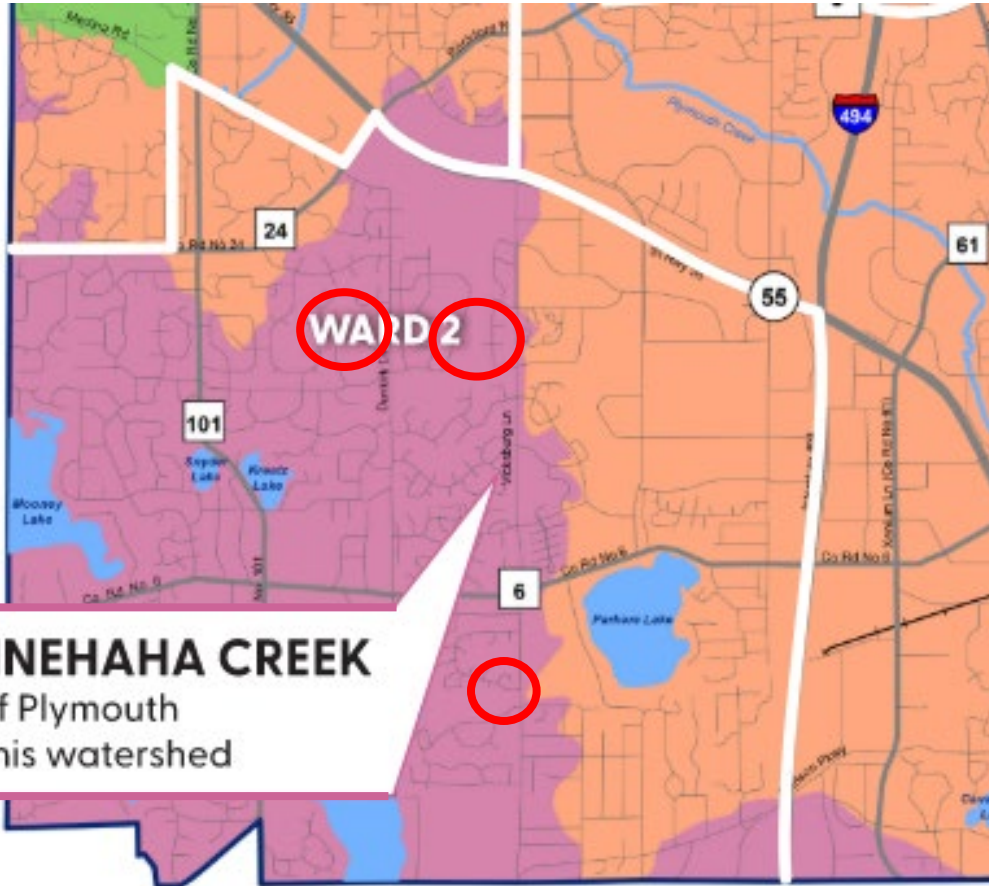


MINNEHAHA CREEK

16% of Plymouth
is in this watershed

Minnehaha Creek Watershed District

- Recent Projects:
 - Gleason Lake Subwatershed Water Quality & Quantity Projects
 - Maple Creek Stream Restoration (partial funding)
 - Birch Briar Infiltration Basin Expansion (proposed)
 - Ponderosa Street Reconstruction Project Rain Gardens



What do Watersheds Do?

- Stormwater Management
 - Project Reviews
 - Flood Analysis and Prevention
- Water Quality Impairments
 - TMDLs
 - Monitoring
- Protect & Enhance Lakes and Streams
 - Water Quality Improvements
- Education & Partnerships



Stormwater Management

- Project Reviews



**WATER RESOURCES PERMITS &
STORMWATER MANAGEMENT GUIDANCE**

Updated 09/11/2024

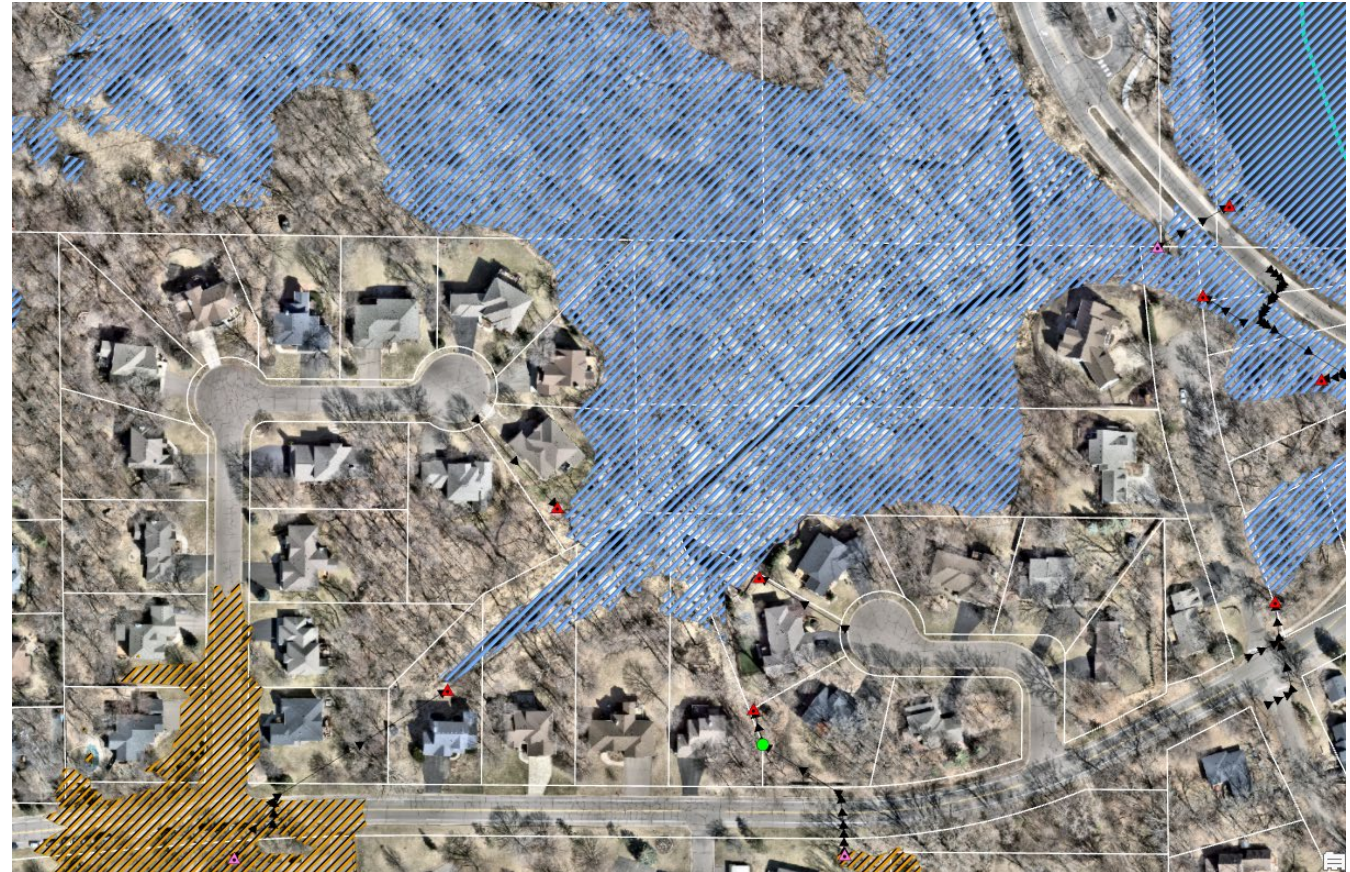
WATER RESOURCES PERMITS

Below are common permits and reviews required for grading activities. Please ensure all appropriate permits are obtained and applicable reviews are completed before grading or construction work begins.

Permits	Permit Threshold
City of Plymouth Grading Permit	<ul style="list-style-type: none"> • 50 cubic yards* or more of grading or disturbance • 10 cubic yards or more of grading or disturbance if in a Shoreland Management Overlay District <p><i>*A standard dump truck holds approximately 10-15 cubic yards</i></p>
Stormwater Management Review	If adding or fully reconstructing impervious surface: <ul style="list-style-type: none"> • More than half (1/2) an acre => Rate Control • One or more acres => Rate Control & Water Quality Treatment <p><i>See next page for details</i></p>
NPDES Construction Stormwater Permit	<ul style="list-style-type: none"> • One acre or more of soil disturbance • Less than one acre of soil disturbance, if that activity is part of a larger common plan of development or sale that covers more than one acre
Watershed Commission Review	Watershed regulations vary by watershed. Please refer to the appropriate watershed to review rules and permit thresholds: <ul style="list-style-type: none"> • Bassett Creek Watershed • Shingle Creek Watershed • Elm Creek Watershed • Minnehaha Creek Watershed
Other Requirements	When working near waterbodies or wetlands, additional permits or reviews may be needed and additional rules may apply. Other regulatory agencies and programs may include: Wetland Conservation Act (WCA), Department of Natural Resources (DNR), Minnesota Pollution Control Agency (MPCA), Federal Emergency Management Agency (FEMA), US Army Corps of Engineers (USACE), and US Fish and Wildlife Service (USFWS).

Questions? Please reach out to the City of Plymouth Engineering Department at engineering@plymouthmn.gov or 763-509-5500

- Flood Analysis and Prevention



Water Quality Impairments

- Total Maximum Daily Load (TMDL)
 - Defines the maximum amount of a substance that a water body can receive and still meet standards.
 - Result in requirement by city and other agencies to reduce pollutant loading.

- Impaired Waters
 - Waters that do not meet the water quality standards for one or more water quality parameters as set out by the Clean Water Act
 - Designated by Minnesota Pollution Control Agency (MPCA)
 - Responsible for implementing the Clean Water Act in Minnesota



Watershed Monitoring

- Watersheds each have monitoring programs
- City supplements these programs
- Coordinate with other agencies such as Three Rivers Park District, Metropolitan Council, and USGS
- Items often monitored
 - City: Total Phosphorus (TP), Orthophosphate (SRP), Total Nitrogen (TN), Total Suspended Solids (TSS) and Chlorides
 - Watersheds: City items + bacteria, biota and dissolved oxygen
- **Early detection of problems can lead to cheaper solutions**



Protect & Enhances Lakes and Streams

- Watersheds focus on:
 - Water quality improvements
 - Watershed
 - Lake internal loading
 - Flood reduction & improvements
 - Habitat restoration/preservation
 - Aquatic Invasive Species (AIS)
- Projects similar to city process
 - CIP – Feasibility – Design – Construction – Warranty
 - Look at metrics (ex. \$ per pounds of phosphorus reduction)



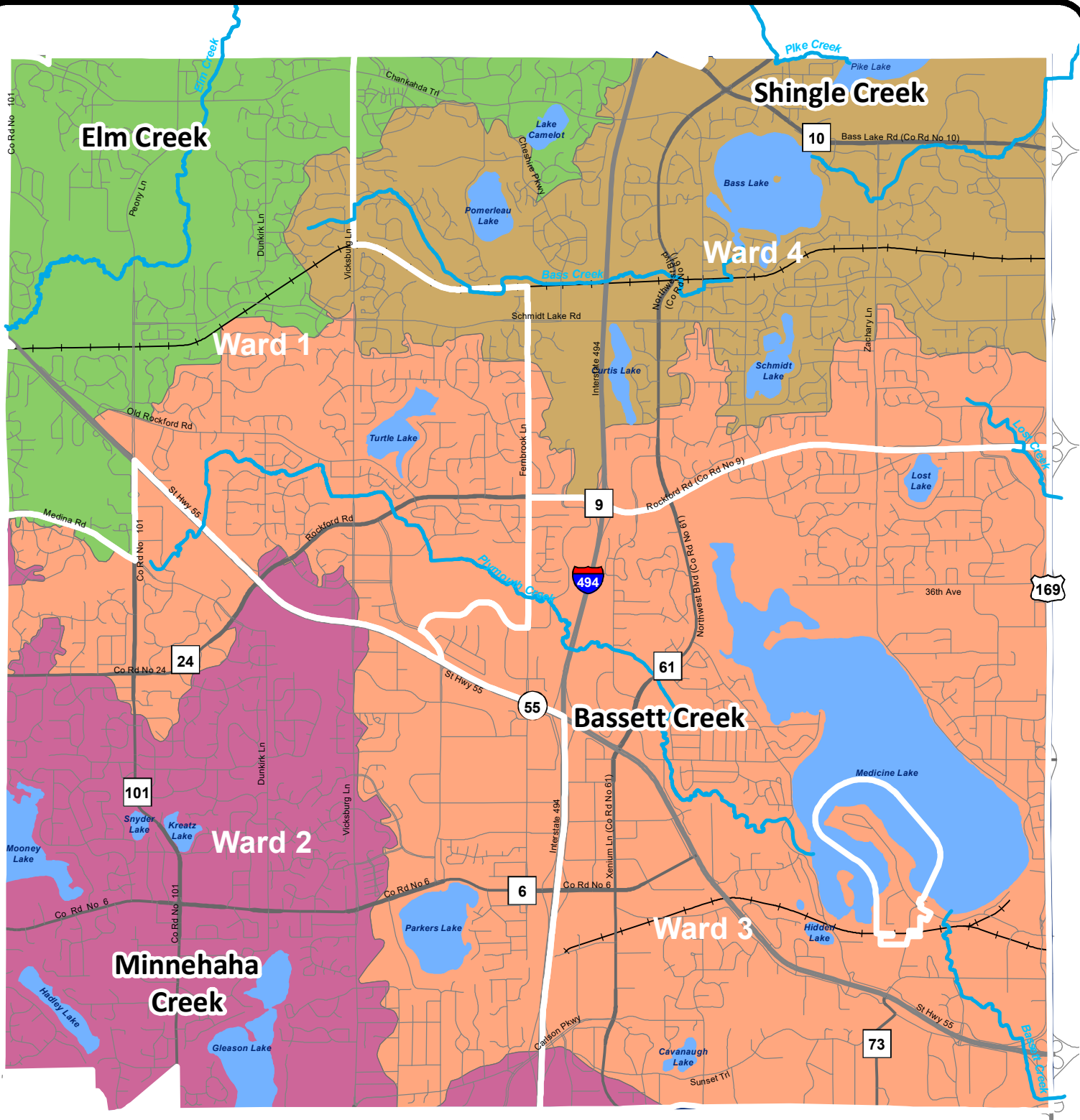
Education & Partnerships

- Workshops
 - Shoreline Improvements
 - Planting for Pollinators
- Watershed PREP
 - Lessons to 4th Grade Classes
 - What is a Watershed and Why Do We Care?
 - The Water Cycle: An Incredible Journey
 - Stormwater Walk
- City Partnerships to meet MS4 Permit Goals



Questions or Comments?





Watersheds in Plymouth

- Creek
- Bassett Creek
- Elm Creek
- Minnehaha Creek
- Shingle Creek



0 1 Miles



October 2024

THIS REPRESENTS A COMPILATION OF INFORMATION AND DATA FROM CITY, COUNTY, STATE AND OTHER SOURCES THAT HAS NOT BEEN FIELD VERIFIED. INFORMATION SHOULD BE FIELD VERIFIED AND COMPARED WITH ORIGINAL SOURCE DOCUMENTS.

To: Dave Callister, City Manager

Prepared by: Jodi Gallup, City Clerk

Reviewed by: Amanda Kaufman, Deputy City Manager

Item: **Set future study sessions and agenda topics**

1. Action Requested:

Schedule future study sessions and agenda topics.

2. Background:

- A. Pending study session topics (at least three council members have approved the following items on the list):
- None at this time
- B. Council requests for study session topics:
- Submit a study session topic proposal form.
- C. Staff requests for study session topics:
- None at this time.

3. Budget Impact:

Not applicable.

4. Attachments:

1. Calendar

SUN	MON	TUES	WED	THUR	FRI	SAT
			1	2	3	4
5	6	7	8 7:00 PM ENVIRONMENTAL QUALITY COMMITTEE MEETING Medicine Lake Room	9	10	11
12	13 5:00 PM SPECIAL COUNCIL MEETING Review park dedication and park replacement funds/ Transportation and transit update Medicine Lake Room 7:00 PM REGULAR COUNCIL MEETING Council Chambers	14	15 10:00 AM DESTINATION MARKETING ORGANIZATION ADVISORY BOARD MEETING Crowne Plaza Minneapolis West 7:00 PM PLANNING COMMISSION MEETING Council Chambers	16	17	18
19	20	21	22	23 7:00 PM HOUSING AND REDEVELOPMENT AUTHORITY MEETING Council Chambers CANCELED	24	25
26	27	28 5:00 PM SPECIAL COUNCIL MEETING State of the water and sewer systems & watershed districts overview Medicine Lake Room 7:00 PM REGULAR COUNCIL MEETING Council Chambers	29	30		

SUN	MON	TUES	WED	THUR	FRI	SAT
					1	2
3	4	5	6	7	8	9
10	11	12 5:00 PM JOINT COUNCIL/ PLANNING COMMISSION SPECIAL MEETING <small>2050 Comprehensive Plan Workshop</small> Medicine Lake Room 7:00 PM REGULAR COUNCIL MEETING Council Chambers	13 7:00 PM ENVIRONMENTAL QUALITY COMMITTEE MEETING Medicine Lake Room	14	15	16
17	18	19	20 7:00 PM PLANNING COMMISSION MEETING Council Chambers	21	22	23
24	25 MEMORIAL DAY CITY OFFICES CLOSED	26 5:00 PM JOINT COUNCIL/ HOUSING AND REDEVELOPMENT AUTHORITY SPECIAL MEETING Medicine Lake Room 7:00 PM REGULAR COUNCIL MEETING Council Chambers	27	28 7:00 PM HOUSING AND REDEVELOPMENT AUTHORITY MEETING Council Chambers	29	30
31						

SUN	MON	TUES	WED	THUR	FRI	SAT
	1	2	3 7:00 PM PLANNING COMMISSION MEETING Council Chambers	4	5	6
7	8	9 5:00 PM SPECIAL COUNCIL MEETING Review Climate Action and Resiliency Plan Medicine Lake Room 7:00 PM REGULAR COUNCIL MEETING Council Chambers	10 7:00 PM ENVIRONMENTAL QUALITY COMMITTEE MEETING Medicine Lake Room	11 6:00 PM PARKS & REC ADVISORY COMMISSION MEETING Council Chambers 7:00 PM CHARTER COMMISSION MEETING Medicine Lake Room	12	13
14	15	16	17 7:00 PM PLANNING COMMISSION MEETING Council Chambers	18	19 JUNETEENTH CITY OFFICES CLOSED	20
21	22	23 5:00 PM SPECIAL COUNCIL MEETING Legislative update Medicine Lake Room 7:00 PM REGULAR COUNCIL MEETING Council Chambers	24	25 7:00 PM HOUSING AND REDEVELOPMENT AUTHORITY MEETING Council Chambers	26	27
28	29	30				

SUN	MON	TUES	WED	THUR	FRI	SAT
			1 7:00 PM PLANNING COMMISSION MEETING Council Chambers	2	3  INDEPENDENCE DAY OBSERVED CITY OFFICES CLOSED	4
5	6	7	8	9	10	11
12	13	14 5:00 PM SPECIAL COUNCIL MEETING Business Outlook & Economic Development Strategic Plan Medicine Lake Room 7:00 PM REGULAR COUNCIL MEETING Council Chambers	15 7:00 PM PLANNING COMMISSION MEETING Council Chambers	16	17	18
19	20	21	22 10:00 AM DESTINATION MARKETING ORGANIZATION ADVISORY BOARD MEETING Mooney Lake Room	23 7:00 PM HOUSING AND REDEVELOPMENT AUTHORITY MEETING Council Chambers	24	25
26	27	28 5:00 PM SPECIAL COUNCIL MEETING Long-term financial forecasting Medicine Lake Room 7:00 PM REGULAR COUNCIL MEETING Council Chambers	29	30	31	